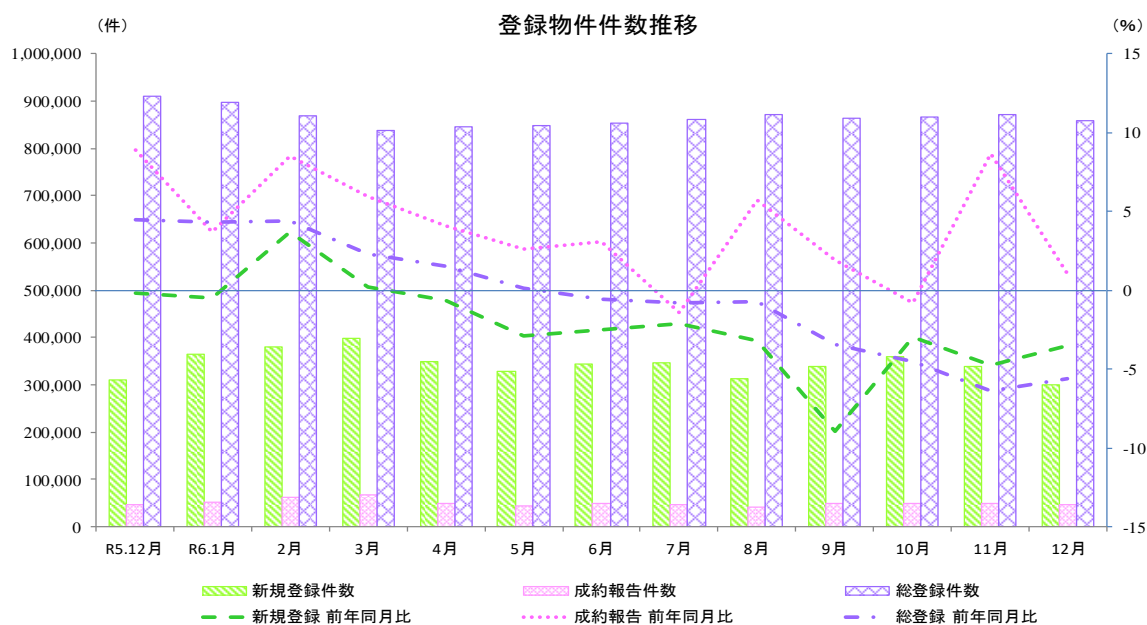


指定流通機構の活用状況について (令和6年12月分)

1. 概況

令和6年12月の指定流通機構の活用状況をみると、新規登録件数は299,292件と前年同月比で9ヶ月連続してマイナスとなり、前月比では2ヶ月連続してマイナスとなった。成約報告件数は45,980件と前年同月比で2ヶ月連続してプラスとなり、前月比ではふたたびマイナスに転じた。総登録件数は859,860件と前年同月比で7ヶ月連続してマイナスとなり、前月比では3ヶ月ぶりにマイナスに転じた。



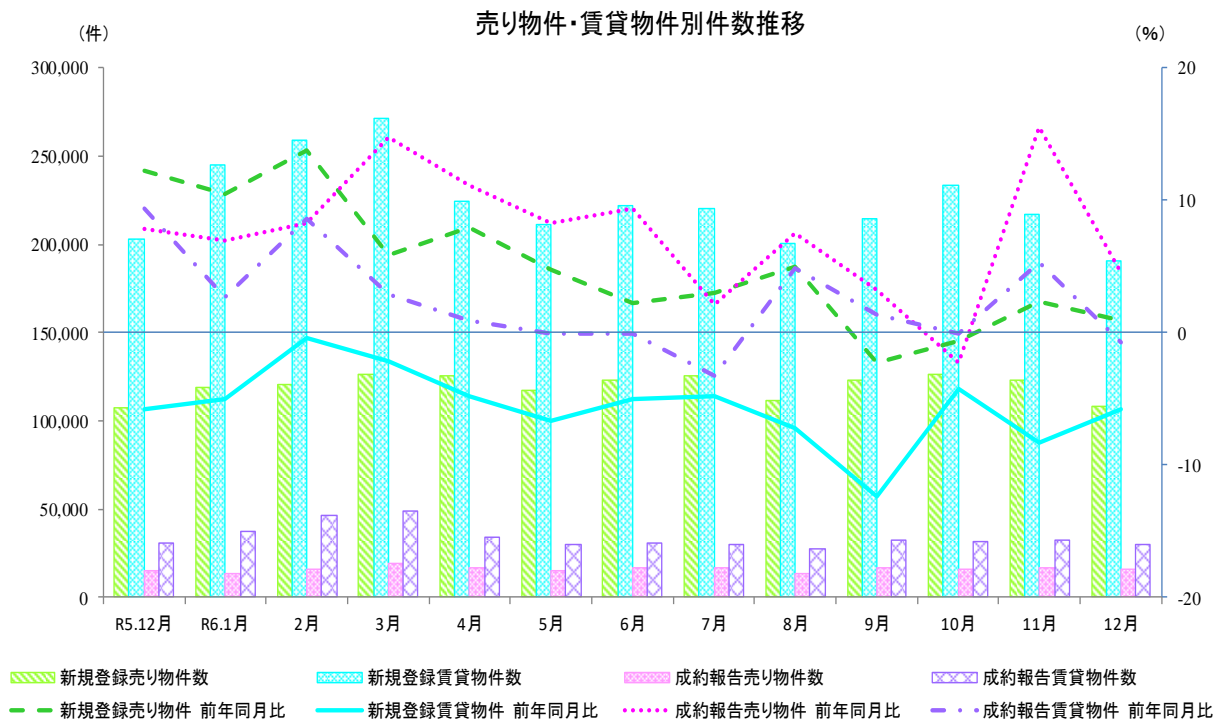
物件件数の推移

	R5.12月	R6.1月	2月	3月	4月	5月	6月	7月	8月	9月	10月	11月	12月
新規登録件数(件)	310,083	364,222	380,000	398,141	349,618	328,791	345,321	345,963	312,635	337,793	359,914	339,987	299,292
前年同月比(%)	▲0.2	▲0.5	3.7	0.2	▲0.6	▲2.9	▲2.5	▲2.1	▲3.2	▲8.9	▲3.0	▲4.7	▲3.5
前月比(%)	▲13.1	17.5	4.3	4.8	▲12.2	▲6.0	5.0	0.2	▲9.6	8.0	6.5	▲5.5	▲12.0
成約報告件数(件)	45,512	50,983	62,390	68,227	50,262	44,925	48,165	46,729	41,087	48,713	48,011	48,900	45,980
前年同月比(%)	8.9	3.7	8.5	6.0	4.1	2.6	3.1	▲1.4	5.7	1.9	▲0.8	8.7	1.0
前月比(%)	1.1	12.0	22.4	9.4	▲26.3	▲10.6	7.2	▲3.0	▲12.1	18.6	▲1.4	1.9	▲6.0
総登録件数(件)	911,170	896,472	869,162	837,673	845,147	848,370	853,736	862,008	872,663	864,906	866,708	870,979	859,860
前年同月比(%)	4.5	4.3	4.4	2.3	1.5	0.2	▲0.5	▲0.8	▲0.7	▲3.4	▲4.5	▲6.4	▲5.6
前月比(%)	▲2.0	▲1.6	▲3.0	▲3.6	0.9	0.4	0.6	1.0	1.2	▲0.9	0.2	0.5	▲1.3

2. 売り・賃貸別物件数

令和6年12月の売り物件数をみると、新規登録件数は108,210件と前年同月比で2ヶ月連続してプラスとなり、前月比では2ヶ月連続してマイナスとなった。成約報告件数は15,678件と前年同月比で2ヶ月連続してプラスとなり、前月比ではふたたびマイナスに転じた。総登録件数は431,973件と前年同月比で31ヶ月連続してプラスとなり、前月比では9ヶ月ぶりにマイナスに転じた。

令和6年12月の賃貸物件数をみると、新規登録件数は191,082件と前年同月比で34ヶ月連続してマイナスとなり、前月比では2ヶ月連続してマイナスとなった。成約報告件数は30,302件と前年同月比でふたたびマイナスに転じ、前月比でもふたたびマイナスに転じた。総登録件数は427,887件と前年同月比で28ヶ月連続してマイナスとなり、前月比ではふたたびマイナスに転じた。



R6年12月 売り物件・賃貸物件別件数

新規登録件数	299,292 件	前年同月比	▲ 3.5 %	👉	前月比	▲ 12.0 %	👇
売り物件	108,210 件	前年同月比	0.9 %	👉	前月比	▲ 11.9 %	👇
賃貸物件	191,082 件	前年同月比	▲ 5.8 %	👉	前月比	▲ 12.0 %	👇
成約報告件数	45,980 件	前年同月比	1.0 %	👉	前月比	▲ 6.0 %	👉
売り物件	15,678 件	前年同月比	4.5 %	👉	前月比	▲ 6.9 %	👉
賃貸物件	30,302 件	前年同月比	▲ 0.7 %	👉	前月比	▲ 5.5 %	👉
総登録件数	859,860 件	前年同月比	▲ 5.6 %	👉	前月比	▲ 1.3 %	👉
売り物件	431,973 件	前年同月比	7.1 %	👉	前月比	▲ 0.1 %	👉
賃貸物件	427,887 件	前年同月比	▲ 15.7 %	👇	前月比	▲ 2.5 %	👉

凡例: 📈 10% ~ 📊 3% ~ 10% 📉 -3% ~ 3% 📉 -10% ~ -3% 📉 ~ -10%

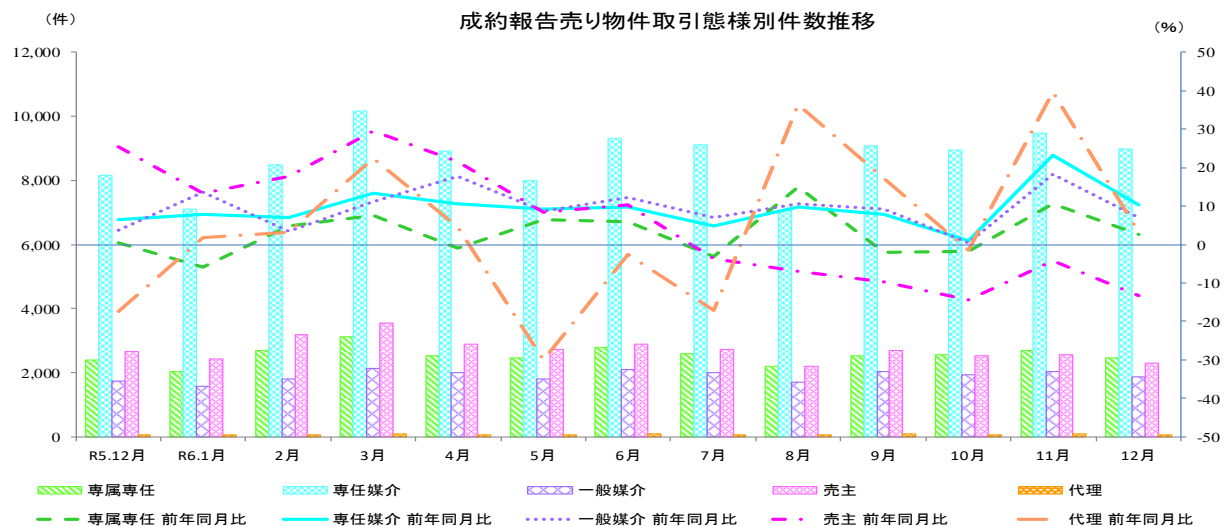
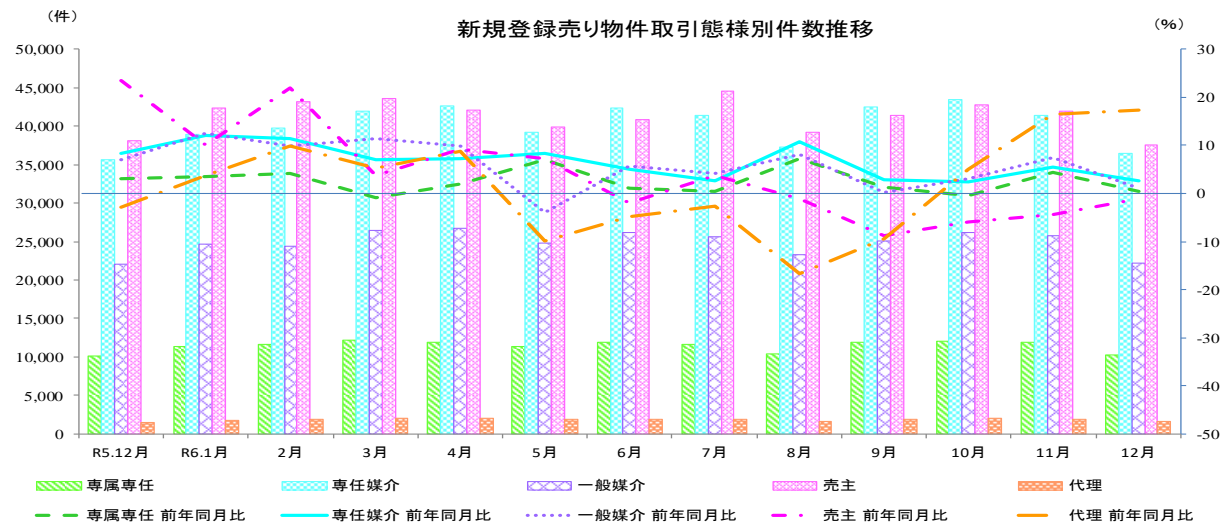
3. 売り物件の取引態様別物件数

令和6年12月の新規登録売り物件の取引態様別をみると、売主は34.8%を占め、次いで専任媒介は33.7%を占めている。成約報告売り物件の取引態様別をみると、専任媒介は57.3%を占め、次いで専属専任は15.8%を占めている。

R6年12月 売り物件の取引態様別件数

	取引態様	件数	構成比	前年同月比	前月比
新規登録件数	媒介契約	68,946 件	63.7 %	1.8 %	▲12.7 %
	専属専任	10,199 件	9.4 %	0.4 %	▲14.2 %
	専任媒介	36,503 件	33.7 %	2.6 %	▲11.8 %
	一般媒介	22,244 件	20.6 %	1.1 %	▲13.5 %
	売主	37,606 件	34.8 %	▲1.2 %	▲10.4 %
	代理	1,658 件	1.5 %	17.4 %	▲12.1 %
成約報告件数	媒介契約	13,315 件	84.9 %	8.3 %	▲6.1 %
	専属専任	2,472 件	15.8 %	2.7 %	▲8.1 %
	専任媒介	8,991 件	57.3 %	10.3 %	▲5.1 %
	一般媒介	1,852 件	11.8 %	6.9 %	▲8.2 %
	売主	2,299 件	14.7 %	▲13.2 %	▲10.3 %
	代理	64 件	0.4 %	3.2 %	▲32.6 %

凡例: ▲ 10% ~ ▲ 3% ~ 10% ➡ -3% ~ 3% ▼ -10% ~ -3% ▼ ~ -10%



指定流通機構実態調査集計、総括表 新規登録件数

		総 数	物 件 種 別				
			マンション	一 戸 建	土 地	住宅外全部	住宅外一部
全 総計件数		299,292	199,736	43,875	28,767	9,007	17,907
[前月比]		[-12.0]	[-11.8]	[-11.7]	[-13.7]	[-11.8]	[-11.9]
売 地	総 計	108,210	35,685	37,337	27,992	6,665	531
	[前月比]	[-11.9]	[-11.0]	[-11.6]	[-13.8]	[-9.3]	[-21.6]
	北海道	3,670	1,236	1,011	1,066	348	9
	[前月比]	[-9.5]	[-0.9]	[-16.1]	[-12.8]	[-5.9]	[-18.2]
	東北	4,384	720	1,764	1,564	319	17
	[前月比]	[-10.4]	[-17.0]	[-10.8]	[-7.7]	[-4.5]	[-10.5]
	関東甲信越	6,320	535	2,461	2,743	564	17
	[前月比]	[-8.0]	[-8.7]	[-5.9]	[-9.4]	[-8.0]	[-29.2]
	首都圏	48,402	21,133	15,011	8,997	2,958	303
	[前月比]	[-13.7]	[-11.9]	[-15.3]	[-15.7]	[-10.1]	[-25.0]
	中部4県	3,700	538	1,412	1,505	231	14
	[前月比]	[-20.4]	[-7.7]	[-16.1]	[-25.9]	[-31.0]	[-26.3]
	中部圏	8,102	1,868	2,751	2,981	491	11
	[前月比]	[-9.1]	[-4.1]	[-9.2]	[-12.3]	[-6.3]	[-21.4]
	近畿圏	19,615	6,441	7,884	4,282	873	135
	[前月比]	[-10.5]	[-14.1]	[-7.1]	[-11.5]	[-9.2]	3.1]
中国	3,451	546	1,355	1,333	215	2	
[前月比]	[-11.1]	[-2.5]	[-13.4]	[-12.9]	0.5]	[-80.0]	
四国	1,519	183	573	650	108	5	
[前月比]	[-2.2]	[-13.3]	1.1]	[-2.4]	3.8]	0.0]	
九州	9,047	2,485	3,115	2,871	558	18	
[前月比]	[-10.2]	[-5.9]	[-8.3]	[-15.5]	[-7.6]	[-55.0]	
取 引 態 様 別	専属専任	10,199	3,708	2,991	2,734	731	35
	[前月比]	[-14.2]	[-14.6]	[-15.3]	[-13.1]	[-12.7]	[-2.8]
	専任媒介	36,503	12,083	11,698	10,537	2,048	137
	[前月比]	[-11.8]	[-9.5]	[-12.2]	[-13.5]	[-13.0]	[-25.9]
	一般媒介	22,244	6,376	6,648	6,808	2,296	116
	[前月比]	[-13.5]	[-15.0]	[-14.3]	[-13.1]	[-7.8]	[-25.6]
売主	37,606	12,949	15,561	7,510	1,368	218	
[前月比]	[-10.4]	[-8.8]	[-9.3]	[-16.0]	[-2.4]	[-19.6]	
代理	1,658	569	439	403	222	25	
[前月比]	[-12.1]	[-21.7]	[-8.4]	4.7]	[-16.9]	[-13.8]	
賃 物 別		191,082	164,051	6,538	775	2,342	17,376
[前月比]		[-12.0]	[-11.9]	[-12.0]	[-10.8]	[-18.3]	[-11.6]
賃 地	北海道	1,179	1,068	18	10	11	72
	[前月比]	[-19.2]	[-18.8]	[-18.2]	42.9]	[-38.9]	[-25.8]
	東北	3,714	3,260	155	29	55	215
	[前月比]	[-23.5]	[-23.2]	[-6.6]	26.1]	3.8]	[-41.7]
	関東甲信越	5,258	4,528	241	59	82	348
	[前月比]	[-13.4]	[-13.5]	[-14.2]	[-3.3]	[-17.2]	[-12.8]
	首都圏	131,129	115,561	3,309	285	1,063	10,911
	[前月比]	[-12.3]	[-12.4]	[-12.5]	[-8.7]	[-14.0]	[-10.5]
	中部4県	2,062	1,360	202	27	87	386
	[前月比]	[-13.6]	[-14.5]	[-3.3]	[-44.9]	[-27.5]	[-7.9]
	中部圏	3,289	2,304	162	72	88	663
	[前月比]	1.3]	6.9]	[-1.2]	[-24.2]	[-23.5]	[-7.7]
	近畿圏	35,385	29,089	1,700	153	709	3,734
	[前月比]	[-10.4]	[-9.3]	[-17.2]	[-8.4]	[-22.6]	[-13.2]
	中国	1,695	1,065	248	29	56	297
	[前月比]	[-4.0]	[-8.4]	2.1]	[-37.0]	[-28.2]	26.4]
四国	617	415	71	30	23	78	
[前月比]	[-6.5]	[-6.1]	[-1.4]	200.0]	[-20.7]	[-27.1]	
九州	6,754	5,401	432	81	168	672	
[前月比]	[-12.1]	[-11.9]	[-0.2]	[-18.2]	[-16.8]	[-18.3]	

* 前月比欄の数値は、対前月増減率である。

* 「関東甲信越」は、茨城県・栃木県・群馬県・新潟県・山梨県・長野県、「首都圏」は、東京都・千葉県・埼玉県・神奈川県、「中部圏」は、愛知県・岐阜県・三重県、「中部4県」は、富山県・石川県・福井県・静岡県、「近畿圏」は、大阪府・京都府・兵庫県・滋賀県・奈良県・和歌山県をいう。

指定流通機構実態調査 売り物件・新規登録件数 時系列表

	5年12月	6年1月	6年2月	6年3月	6年4月	6年5月	6年6月	6年7月	6年8月	6年9月	6年10月	6年11月	6年12月	一年間計
	件数	件数	件数	件数	件数	件数	件数	件数	件数	件数	件数	件数	件数	件数
	(前月比)	(前月比)	(前月比)	(前月比)	(前月比)	(前月比)	(前月比)	(前月比)	(前月比)	(前月比)	(前月比)	(前月比)	(前月比)	(前月比)
	(前年比)	(前年比)	(前年比)	(前年比)	(前年比)	(前年比)	(前年比)	(前年比)	(前年比)	(前年比)	(前年比)	(前年比)	(前年比)	(前年比)
総数	107,208 (-10.7) [12.2]	118,996 (11.0) [10.5]	120,794 (1.5) [13.8]	126,273 (4.5) [5.8]	125,446 (-0.7) [7.9]	117,118 (-6.6) [4.7]	123,295 (5.3) [2.2]	125,209 (1.6) [3.0]	111,820 (-10.7) [5.0]	122,933 (9.9) [-2.2]	126,493 (2.9) [-0.6]	122,871 (-2.9) [2.3]	108,210 (-11.9) [0.9]	1,449,458
北海道	3,941 (-16.7) [13.7]	3,962 (0.5) [9.0]	3,870 (-2.3) [9.0]	4,111 (6.2) [6.2]	4,606 (12.0) [7.5]	4,203 (-8.7) [7.5]	4,537 (7.9) [-1.6]	4,779 (5.3) [-4.4]	4,227 (-11.6) [0.8]	4,631 (9.6) [6.1]	4,497 (-2.9) [-5.6]	4,055 (-9.8) [-8.1]	3,670 (-9.5) [-14.3]	51,148 (3.5) [-6.9]
東北	4,021 (-6.2) [13.2]	4,028 (0.2) [19.5]	4,596 (14.1) [31.3]	5,032 (9.5) [26.3]	4,512 (-10.3) [3.6]	4,484 (-0.6) [-1.3]	4,951 (10.4) [10.0]	5,159 (4.2) [12.9]	4,623 (-10.4) [10.9]	4,894 (5.9) [4.7]	4,974 (1.6) [2.6]	4,891 (-1.7) [14.1]	4,384 (-10.4) [9.0]	56,528 (3.9)
関東甲信越	6,138 (-4.2) [15.5]	6,344 (3.4) [11.1]	5,962 (-6.0) [7.5]	6,827 (14.5) [9.5]	6,481 (-5.1) [1.0]	6,518 (0.6) [-4.5]	6,778 (4.0) [-1.2]	7,143 (5.4) [4.2]	6,207 (-13.1) [0.1]	6,680 (7.6) [-9.6]	6,915 (3.5) [-4.8]	6,867 (-0.7) [7.2]	6,320 (-8.0) [3.0]	79,042
首都圏	48,969 (-14.8) [11.1]	59,949 (14.3) [8.4]	58,168 (4.0) [13.7]	58,982 (1.4) [3.0]	58,612 (-0.6) [6.2]	53,772 (-8.3) [7.0]	56,541 (5.1) [-1.0]	57,230 (1.2) [-1.6]	50,117 (-12.4) [-0.5]	56,529 (12.8) [-3.8]	58,283 (3.1) [-3.3]	56,064 (-3.8) [-2.4]	48,402 (-13.7) [-1.2]	668,649 (46.1)
中部4県	4,150 (-7.5) [13.8]	4,344 (4.7) [4.1]	4,309 (-0.8) [9.9]	4,691 (8.9) [1.4]	5,020 (7.0) [13.2]	4,414 (-12.1) [-7.4]	4,666 (5.7) [5.1]	5,107 (9.5) [10.2]	4,132 (-19.1) [-4.0]	4,170 (0.9) [-7.5]	5,218 (25.1) [8.2]	4,650 (-10.9) [3.6]	3,700 (-20.4) [-10.8]	54,421 (3.8)
中部圏	8,121 (-3.4) [9.8]	8,781 (8.1) [6.7]	8,394 (-4.4) [11.3]	9,139 (8.9) [6.6]	9,303 (1.8) [11.5]	8,147 (-12.4) [-0.9]	8,390 (3.0) [1.7]	8,837 (5.3) [5.0]	7,872 (-10.9) [7.8]	8,422 (7.0) [-7.8]	8,739 (3.8) [-3.8]	8,914 (2.0) [6.0]	8,102 (-9.1) [-0.2]	103,040 (7.1)
近畿圏	18,102 (-9.3) [16.9]	20,923 (15.6) [15.5]	21,316 (1.9) [15.8]	22,303 (4.6) [11.4]	21,772 (-2.4) [12.3]	20,294 (-6.8) [11.5]	20,818 (2.6) [5.1]	21,732 (4.4) [7.3]	19,578 (-9.9) [13.1]	22,249 (13.6) [4.3]	21,828 (-1.9) [1.6]	21,918 (0.4) [9.9]	19,615 (-10.5) [8.4]	254,346 (17.5)
中国	3,243 (-10.6) [-1.8]	3,659 (12.8) [-2.3]	3,513 (-4.0) [-2.6]	3,616 (2.9) [-4.2]	3,935 (8.8) [11.5]	3,667 (-6.8) [5.7]	3,650 (-0.5) [2.0]	3,955 (8.4) [11.7]	3,368 (-14.8) [8.1]	4,033 (19.7) [11.4]	4,090 (1.4) [12.1]	3,880 (-5.1) [7.0]	3,451 (-11.1) [6.4]	44,817 (3.1)
四国	1,865 (29.0) [-0.9]	1,267 (-32.1) [11.5]	1,330 (5.0) [7.4]	1,504 (13.1) [-25.2]	1,428 (-5.1) [5.3]	2,244 (57.1) [49.1]	3,424 (52.6) [58.5]	1,496 (-56.3) [7.9]	2,133 (42.6) [66.5]	1,459 (-31.6) [-27.2]	2,124 (45.6) [46.0]	1,553 (-26.9) [7.4]	1,519 (-2.2) [-18.6]	21,481 (1.5)
九州	8,658 (-6.8) [17.0]	9,739 (12.5) [21.5]	9,336 (-4.1) [22.3]	10,068 (7.8) [15.4]	9,777 (-2.9) [9.1]	9,375 (-4.1) [-4.3]	9,540 (1.8) [3.8]	9,771 (2.4) [8.9]	9,563 (-2.1) [13.6]	9,866 (3.2) [5.2]	9,825 (-0.4) [3.3]	10,079 (2.6) [8.5]	9,047 (-10.2) [4.5]	115,986
取引様別	専属専任媒介 10,162 (-10.9) [3.1]	11,375 (11.9) [3.4]	11,611 (2.1) [4.1]	12,202 (5.1) [-0.8]	11,917 (-2.3) [1.9]	11,368 (-4.6) [7.0]	11,866 (4.4) [1.1]	11,629 (-2.0) [0.3]	10,452 (-10.1) [7.2]	11,965 (14.5) [1.3]	12,087 (1.0) [-0.4]	11,892 (-1.6) [4.3]	10,199 (-14.2) [0.4]	138,563 (9.6)
専任媒介	35,578 (-9.3) [8.3]	38,892 (9.3) [12.1]	39,801 (2.3) [11.4]	42,016 (5.6) [6.9]	42,636 (1.5) [7.2]	39,270 (-7.9) [8.4]	42,430 (8.0) [5.1]	41,410 (-2.4) [2.7]	37,244 (-10.1) [10.8]	42,510 (14.1) [2.9]	43,454 (2.2) [2.4]	41,394 (-4.7) [5.5]	36,503 (-11.8) [2.6]	487,560
一般媒介	21,998 (-8.1) [7.0]	24,632 (12.0) [12.6]	24,344 (-1.2) [9.9]	26,479 (8.8) [11.4]	26,769 (1.1) [10.0]	24,753 (-7.5) [-3.9]	26,161 (5.7) [5.6]	25,680 (-1.8) [4.1]	23,359 (-9.0) [8.0]	25,107 (7.5) [0.2]	26,160 (4.2) [3.1]	25,730 (-1.6) [7.5]	22,244 (-13.5) [1.1]	301,418 (20.8)
別売主	38,058 (-13.3) [23.6]	42,367 (11.3) [10.1]	43,172 (1.9) [22.0]	43,540 (0.9) [3.6]	42,097 (-3.3) [9.2]	39,898 (-5.2) [7.2]	40,930 (2.6) [-2.0]	44,599 (9.0) [3.7]	39,198 (-12.1) [-1.1]	41,475 (5.8) [-8.8]	42,788 (3.2) [-5.8]	41,968 (-1.9) [-4.4]	37,606 (-10.4) [-1.2]	499,638 (34.5)
代理	1,412 (-12.8) [-2.8]	1,730 (22.5) [3.7]	1,866 (7.9) [9.9]	2,036 (9.1) [5.2]	2,027 (-0.4) [8.8]	1,829 (-9.9) [-9.9]	1,908 (4.3) [-4.8]	1,891 (-0.9) [-2.6]	1,567 (-17.1) [-16.6]	1,876 (19.7) [-9.4]	2,004 (6.8) [5.0]	1,887 (-5.8) [16.5]	1,658 (-12.1) [17.4]	22,279 (1.5)
物件種類別	マンション 36,569 (-11.5) [4.8]	41,624 (13.8) [4.9]	42,382 (1.8) [5.8]	44,079 (4.0) [0.3]	43,425 (-1.5) [2.0]	39,449 (-9.2) [0.7]	41,372 (4.9) [-3.2]	40,708 (-1.6) [-6.2]	36,377 (-10.6) [-2.3]	41,362 (13.7) [-4.9]	41,855 (1.2) [-4.0]	40,115 (-4.2) [-3.0]	35,685 (-11.0) [-2.4]	488,433 (33.7)
一戸建	37,109 (-10.4) [20.3]	39,757 (7.1) [12.9]	41,179 (3.6) [21.3]	42,443 (3.1) [7.9]	41,345 (-2.6) [11.5]	39,074 (-5.5) [8.3]	41,321 (5.8) [3.4]	43,840 (6.1) [8.1]	38,426 (-12.3) [6.8]	41,988 (9.3) [-2.7]	42,485 (1.2) [-2.6]	42,252 (-0.5) [2.0]	37,337 (-11.6) [0.6]	491,447
土地	27,410 (-9.5) [12.3]	30,878 (12.7) [15.8]	29,957 (-3.0) [15.4]	32,088 (7.1) [10.2]	32,885 (2.5) [11.1]	30,920 (-6.0) [2.0]	32,913 (6.4) [6.7]	32,744 (-0.5) [7.0]	29,983 (-8.4) [10.6]	31,449 (4.9) [-1.8]	33,652 (7.0) [3.2]	32,478 (-3.5) [7.2]	27,992 (-13.8) [2.1]	377,939 (26.1)
別宅外(全部)	5,593 (-13.3) [13.5]	6,121 (9.4) [7.7]	6,621 (8.2) [18.3]	7,047 (6.4) [13.4]	7,184 (1.9) [13.0]	7,066 (-1.6) [24.5]	7,121 (0.8) [11.3]	7,251 (1.8) [12.9]	6,423 (-11.4) [14.1]	7,446 (15.9) [16.1]	7,885 (5.9) [15.9]	7,349 (-6.8) [14.0]	6,665 (-9.3) [19.2]	84,179 (5.8)
別宅外(一部)	527 (-9.5) [21.7]	616 (16.9) [22.5]	655 (6.3) [13.7]	616 (-6.0) [-11.9]	607 (-1.5) [-5.5]	609 (0.3) [0.0]	588 (-6.7) [-19.9]	666 (11.3) [13.3]	611 (-8.3) [23.7]	688 (12.6) [6.7]	616 (-10.5) [-9.5]	677 (9.9) [16.3]	531 (-21.6) [0.8]	7,460

※ 構成比は、四捨五入による端数処理のため内数の合計が100%にならないことがある

指定流通機構実態調査集計、総括表 地域別取引態様別売物件月間新規登録件数

地域	取引態様	総数	物件種別				
			マンション	一戸建	土地	住宅外全部	住宅外一部
北海道	専属専任 [構成比]	314 [8.6]	96 [7.8]	73 [7.2]	113 [10.6]	28 [8.0]	4 [44.4]
	専任媒介 [構成比]	1,657 [45.1]	394 [31.9]	496 [49.1]	602 [56.5]	164 [47.1]	1 [11.1]
	一般媒介 [構成比]	721 [19.6]	162 [13.1]	231 [22.8]	212 [19.9]	114 [32.8]	2 [22.2]
	売主 [構成比]	970 [26.4]	583 [47.2]	207 [20.5]	137 [12.9]	41 [11.8]	2 [22.2]
	代理 [構成比]	8 [0.2]	1 [0.1]	4 [0.4]	2 [0.2]	1 [0.3]	0 [0.0]
	合計 [地域比]	3,670 [3.4]	1,236 [3.5]	1,011 [2.7]	1,066 [3.8]	348 [5.2]	9 [1.7]
東北	専属専任 [構成比]	276 [6.3]	54 [7.5]	65 [3.7]	105 [6.7]	51 [16.0]	1 [5.9]
	専任媒介 [構成比]	1,542 [35.2]	258 [35.8]	547 [31.0]	647 [41.4]	88 [27.6]	2 [11.8]
	一般媒介 [構成比]	1,120 [25.5]	128 [17.8]	360 [20.4]	513 [32.8]	112 [35.1]	7 [41.2]
	売主 [構成比]	1,425 [32.5]	278 [38.6]	789 [44.7]	288 [18.4]	63 [19.7]	7 [41.2]
	代理 [構成比]	21 [0.5]	2 [0.3]	3 [0.2]	11 [0.7]	5 [1.6]	0 [0.0]
	合計 [地域比]	4,384 [4.1]	720 [2.0]	1,764 [4.7]	1,564 [5.6]	319 [4.8]	17 [3.2]
関東甲信越	専属専任 [構成比]	406 [6.4]	39 [7.3]	109 [4.4]	210 [7.7]	47 [8.3]	1 [5.9]
	専任媒介 [構成比]	2,054 [32.5]	201 [37.6]	801 [32.5]	871 [31.8]	172 [30.5]	9 [52.9]
	一般媒介 [構成比]	1,792 [28.4]	153 [28.6]	459 [18.7]	899 [32.8]	278 [49.3]	3 [17.6]
	売主 [構成比]	1,974 [31.2]	133 [24.9]	1,068 [43.4]	713 [26.0]	56 [9.9]	4 [23.5]
	代理 [構成比]	94 [1.5]	9 [1.7]	24 [1.0]	50 [1.8]	11 [2.0]	0 [0.0]
	合計 [地域比]	6,320 [5.8]	535 [1.5]	2,461 [6.6]	2,743 [9.8]	564 [8.5]	17 [3.2]
首都圏	専属専任 [構成比]	4,030 [8.3]	2,065 [9.8]	884 [5.9]	816 [9.1]	249 [8.4]	16 [5.3]
	専任媒介 [構成比]	14,833 [30.6]	6,367 [30.1]	4,322 [28.8]	3,241 [36.0]	839 [28.4]	64 [21.1]
	一般媒介 [構成比]	6,197 [12.8]	3,038 [14.4]	1,292 [8.6]	1,022 [11.4]	793 [26.8]	52 [17.2]
	売主 [構成比]	22,253 [46.0]	9,224 [43.6]	8,209 [54.7]	3,745 [41.6]	916 [31.0]	159 [52.5]
	代理 [構成比]	1,089 [2.2]	439 [2.1]	304 [2.0]	173 [1.9]	161 [5.4]	12 [4.0]
	合計 [地域比]	48,402 [44.7]	21,133 [59.2]	15,011 [40.2]	8,997 [32.1]	2,958 [44.4]	303 [57.1]
中部四県	専属専任 [構成比]	276 [7.5]	20 [3.7]	107 [7.6]	121 [8.0]	28 [12.1]	0 [0.0]
	専任媒介 [構成比]	1,300 [35.1]	237 [44.1]	477 [33.8]	514 [34.2]	69 [29.9]	3 [21.4]
	一般媒介 [構成比]	1,279 [34.6]	177 [32.9]	417 [29.5]	565 [37.5]	116 [50.2]	4 [28.6]
	売主 [構成比]	816 [22.1]	103 [19.1]	400 [28.3]	291 [19.3]	15 [6.5]	7 [50.0]
	代理 [構成比]	29 [0.8]	1 [0.2]	11 [0.8]	14 [0.9]	3 [1.3]	0 [0.0]
	合計 [地域比]	3,700 [3.4]	538 [1.5]	1,412 [3.8]	1,505 [5.4]	231 [3.5]	14 [2.6]
中部圏	専属専任 [構成比]	652 [8.0]	203 [10.9]	169 [6.1]	201 [6.7]	76 [15.5]	3 [27.3]
	専任媒介 [構成比]	2,885 [35.6]	742 [39.7]	861 [31.3]	1,134 [38.0]	145 [29.5]	3 [27.3]
	一般媒介 [構成比]	2,127 [26.3]	352 [18.8]	611 [22.2]	932 [31.3]	229 [46.6]	3 [27.3]
	売主 [構成比]	2,377 [29.3]	554 [29.7]	1,100 [40.0]	683 [22.9]	38 [7.7]	2 [18.2]
	代理 [構成比]	61 [0.8]	17 [0.9]	10 [0.4]	31 [1.0]	3 [0.6]	0 [0.0]
	合計 [地域比]	8,102 [7.5]	1,868 [5.2]	2,751 [7.4]	2,981 [10.6]	491 [7.4]	11 [2.1]
近畿圏	専属専任 [構成比]	3,111 [15.9]	980 [15.2]	1,268 [16.1]	710 [16.6]	146 [16.7]	7 [5.2]
	専任媒介 [構成比]	6,435 [32.8]	2,464 [38.3]	2,174 [27.6]	1,498 [35.0]	252 [28.9]	47 [34.8]
	一般媒介 [構成比]	4,500 [22.9]	1,525 [23.7]	1,686 [21.4]	969 [22.6]	280 [32.1]	40 [29.6]
	売主 [構成比]	5,328 [27.2]	1,402 [21.8]	2,695 [34.2]	1,035 [24.2]	166 [19.0]	30 [22.2]
	代理 [構成比]	241 [1.2]	70 [1.1]	61 [0.8]	70 [1.6]	29 [3.3]	11 [8.1]
	合計 [地域比]	19,615 [18.1]	6,441 [18.0]	7,884 [21.1]	4,282 [15.3]	873 [13.1]	135 [25.4]
中国	専属専任 [構成比]	248 [7.2]	17 [3.1]	77 [5.7]	118 [8.9]	36 [16.7]	0 [0.0]
	専任媒介 [構成比]	1,703 [49.3]	310 [56.8]	700 [51.7]	610 [45.8]	81 [37.7]	2 [100.0]
	一般媒介 [構成比]	965 [28.0]	126 [23.1]	345 [25.5]	426 [32.0]	68 [31.6]	0 [0.0]
	売主 [構成比]	512 [14.8]	93 [17.0]	231 [17.0]	160 [12.0]	28 [13.0]	0 [0.0]
	代理 [構成比]	23 [0.7]	0 [0.0]	2 [0.1]	19 [1.4]	2 [0.9]	0 [0.0]
	合計 [地域比]	3,451 [3.2]	546 [1.5]	1,355 [3.6]	1,333 [4.8]	215 [3.2]	2 [0.4]
四国	専属専任 [構成比]	131 [8.6]	6 [3.3]	55 [9.6]	60 [9.2]	9 [8.3]	1 [20.0]
	専任媒介 [構成比]	454 [29.9]	89 [48.6]	132 [23.0]	208 [32.0]	23 [21.3]	2 [40.0]
	一般媒介 [構成比]	619 [40.8]	39 [21.3]	206 [36.0]	299 [46.0]	73 [67.6]	2 [40.0]
	売主 [構成比]	299 [19.7]	47 [25.7]	178 [31.1]	71 [10.9]	3 [2.8]	0 [0.0]
	代理 [構成比]	16 [1.1]	2 [1.1]	2 [0.3]	12 [1.8]	0 [0.0]	0 [0.0]
	合計 [地域比]	1,519 [1.4]	183 [0.5]	573 [1.5]	650 [2.3]	108 [1.6]	5 [0.9]
九州	専属専任 [構成比]	755 [8.3]	228 [9.2]	184 [5.9]	280 [9.8]	61 [10.9]	2 [11.1]
	専任媒介 [構成比]	3,640 [40.2]	1,021 [41.1]	1,188 [38.1]	1,212 [42.2]	215 [38.5]	4 [22.2]
	一般媒介 [構成比]	2,924 [32.3]	676 [27.2]	1,041 [33.4]	971 [33.8]	233 [41.8]	3 [16.7]
	売主 [構成比]	1,652 [18.3]	532 [21.4]	684 [22.0]	387 [13.5]	42 [7.5]	7 [38.9]
	代理 [構成比]	76 [0.8]	28 [1.1]	18 [0.6]	21 [0.7]	7 [1.3]	2 [11.1]
	合計 [地域比]	9,047 [8.4]	2,485 [7.0]	3,115 [8.3]	2,871 [10.3]	558 [8.4]	18 [3.4]
全国	専属専任 [構成比]	10,199 [9.4]	3,708 [10.4]	2,991 [8.0]	2,734 [9.8]	731 [11.0]	35 [6.6]
	専任媒介 [構成比]	36,503 [33.7]	12,083 [33.9]	11,698 [31.3]	10,537 [37.6]	2,048 [30.7]	137 [25.8]
	一般媒介 [構成比]	22,244 [20.6]	6,376 [17.9]	6,648 [17.8]	6,808 [24.3]	2,296 [34.4]	116 [21.8]
	売主 [構成比]	37,606 [34.8]	12,949 [36.3]	15,561 [41.7]	7,510 [26.8]	1,368 [20.5]	218 [41.1]
	代理 [構成比]	1,658 [1.5]	569 [1.6]	439 [1.2]	403 [1.4]	222 [3.3]	25 [4.7]
	合計	108,210	35,685	37,337	27,992	6,665	531

※構成比とは地域内の取引態様別構成比で、地域比とは全国合計の地域別シェアである。

※構成比・地域比は、四捨五入による端数処理のため内数の合計が100%にならないことがある。

指定流通機構実態調査集計、総括表 月間成約件数

		総 数	物 件 種 別				
			マンション	一 戸 建	土 地	住宅外全部	住宅外一部
全	総計件数	45,980	32,730	6,552	3,674	823	2,201
	[前月比]	[-6.0]	[-5.5]	[-9.1]	[-5.3]	[-7.4]	[-3.7]
売	総 計	15,678	6,088	5,434	3,607	499	50
	[前月比]	[-6.9]	[-6.3]	[-9.4]	[-4.8]	[-0.4]	[-3.8]
り	北海道	835	189	324	275	46	1
	[前月比]	[-6.2]	[-26.5]	[-8.7]	19.0	4.5	[-66.7]
地	東北	593	113	266	185	28	1
	[前月比]	[-6.9]	1.8	[-11.0]	[-9.3]	27.3	0.0
域	関東甲信越	687	105	344	214	22	2
	[前月比]	0.7	[-1.9]	4.2	[-0.9]	[-12.0]	[-50.0]
物	首都圏	5,927	3,165	1,567	992	178	25
	[前月比]	[-5.1]	[-2.0]	[-11.9]	[-4.5]	4.1	[-3.8]
別	中部4県	459	75	208	166	9	1
	[前月比]	[-13.1]	[-25.7]	[-11.1]	[-6.2]	[-40.0]	0.0
件	中部圏	1,348	379	426	504	37	2
	[前月比]	[-5.4]	[-5.0]	[-11.6]	1.4	[-19.6]	100.0
取	近畿圏	3,672	1,455	1,424	679	100	14
	[前月比]	[-11.6]	[-7.3]	[-13.6]	[-17.2]	[-3.8]	27.3
引	中国	691	164	305	201	21	0
	[前月比]	[-0.9]	[-9.4]	3.4	0.0	5.0	-
態	四国	185	43	76	55	10	1
	[前月比]	[-11.9]	[-10.4]	[-23.2]	[-6.8]	233.3	0.0
様	九州	1,281	400	494	336	48	3
	[前月比]	[-6.8]	[-19.4]	3.3	[-2.9]	[-5.9]	[-25.0]
別	専属専任	2,472	1,119	769	496	84	4
	[前月比]	[-8.1]	[-9.5]	[-9.8]	[-3.7]	0.0	100.0
件	専任媒介	8,991	3,883	2,711	2,080	285	32
	[前月比]	[-5.1]	[-4.7]	[-6.7]	[-4.6]	2.5	[-3.0]
別	一般媒介	1,852	577	654	512	101	8
	[前月比]	[-8.2]	[-11.4]	[-10.9]	[-2.8]	2.0	14.3
取	売主	2,299	481	1,281	504	28	5
	[前月比]	[-10.3]	[-4.6]	[-13.2]	[-7.0]	[-17.6]	[-37.5]
引	代理	64	28	19	15	1	1
	[前月比]	[-32.6]	[-15.2]	[-34.5]	[-40.0]	[-83.3]	[-50.0]
賃	総 計	30,302	26,642	1,118	67	324	2,151
	[前月比]	[-5.5]	[-5.3]	[-7.8]	[-26.4]	[-16.5]	[-3.7]
賃	北海道	71	53	5	1	9	3
	[前月比]	[-26.8]	[-20.9]	[-61.5]	-	12.5	[-66.7]
地	東北	381	303	36	2	10	30
	[前月比]	8.5	8.6	44.0	0.0	11.1	[-16.7]
域	関東甲信越	429	314	43	1	11	60
	[前月比]	16.9	31.4	[-2.3]	[-88.9]	[-26.7]	0.0
物	首都圏	16,535	14,808	428	27	72	1,200
	[前月比]	[-8.2]	[-8.4]	[-9.1]	[-12.9]	[-35.1]	[-1.7]
件	中部4県	258	157	32	2	11	56
	[前月比]	[-12.2]	[-11.8]	0.0	[-50.0]	[-45.0]	[-6.7]
別	中部圏	527	441	13	8	12	53
	[前月比]	7.3	10.0	[-23.5]	14.3	50.0	[-8.6]
賃	近畿圏	10,435	9,205	458	18	157	597
	[前月比]	[-3.8]	[-3.2]	[-9.8]	[-25.0]	[-12.8]	[-4.9]
件	中国	170	104	27	3	15	21
	[前月比]	3.0	22.4	[-22.9]	[-40.0]	114.3	[-36.4]
別	四国	49	30	9	0	0	10
	[前月比]	[-19.7]	[-18.9]	12.5	[-100.0]	[-100.0]	[-23.1]
賃	九州	1,447	1,227	67	5	27	121
	[前月比]	4.9	5.0	11.7	[-28.6]	[-6.9]	5.2

* 成約件数は成約報告のあった件数である。

指定流通機構実態調査集計、総括表 当月末総登録件数

		総 数	物 件 種 別				
			マンション	一 戸 建	土 地	住宅外全部	住宅外一部
全	総計件数	859,860	419,533	157,306	177,824	34,112	71,085
	[前月比]	[-1.3]	[-2.5]	[0.7]	[0.0]	[-0.8]	[-1.6]
売	総 計	431,973	93,809	139,390	172,960	24,160	1,654
	[前月比]	[-0.1]	[-1.3]	[0.8]	[0.0]	[-0.4]	[-3.9]
り	北海道	17,743	2,836	5,218	8,198	1,458	33
	[前月比]	[-0.9]	[0.4]	[-0.7]	[-1.6]	[-0.4]	[17.9]
地	東北	23,324	2,211	7,927	11,771	1,362	53
	[前月比]	[1.0]	[-2.0]	[1.8]	[1.0]	[1.6]	[6.0]
物	関東甲信越	38,378	1,869	11,019	23,442	1,966	82
	[前月比]	[1.2]	[-0.6]	[2.5]	[0.7]	[2.6]	[-5.7]
別	首都圏	126,038	45,333	40,270	32,208	7,459	768
	[前月比]	[-0.8]	[-1.5]	[0.3]	[-0.6]	[-2.2]	[-7.7]
域	中部4県	25,573	2,144	7,925	14,001	1,441	62
	[前月比]	[0.0]	[-1.2]	[0.6]	[-0.1]	[-1.4]	[6.9]
物	中部圏	41,966	6,755	11,733	21,226	2,176	76
	[前月比]	[0.7]	[0.7]	[2.5]	[-0.3]	[-0.1]	[-3.8]
別	近畿圏	79,089	21,291	29,565	24,045	3,765	423
	[前月比]	[-0.4]	[-1.8]	[0.3]	[-0.1]	[0.1]	[0.0]
件	中国	24,023	2,208	8,326	12,256	1,205	28
	[前月比]	[-0.3]	[-1.2]	[-0.9]	[0.1]	[2.1]	[-12.5]
取	四国	9,646	840	2,782	5,454	549	21
	[前月比]	[2.3]	[-0.9]	[4.0]	[2.0]	[1.9]	[16.7]
引	九州	46,193	8,322	14,625	20,359	2,779	108
	[前月比]	[0.3]	[-0.7]	[1.3]	[0.2]	[-0.3]	[-6.1]
態	専属専任	42,712	11,695	13,521	14,961	2,412	123
	[前月比]	[-0.2]	[-0.9]	[0.1]	[0.5]	[-2.2]	[7.9]
様	専任媒介	165,756	40,334	51,999	64,575	8,300	548
	[前月比]	[-0.2]	[-1.0]	[0.6]	[-0.3]	[-1.1]	[-3.2]
別	一般媒介	130,647	22,571	33,754	63,385	10,390	547
	[前月比]	[0.0]	[-1.6]	[0.7]	[0.2]	[0.7]	[-4.0]
件	売主	88,263	17,938	39,020	28,430	2,485	390
	[前月比]	[0.3]	[-1.5]	[1.6]	[0.0]	[-0.7]	[-8.7]
賃	代理	4,595	1,271	1,096	1,609	573	46
	[前月比]	[-1.2]	[-5.4]	[-3.2]	[4.0]	[-2.1]	[2.2]
賃	総 計	427,887	325,724	17,916	4,864	9,952	69,431
	[前月比]	[-2.5]	[-2.9]	[-0.3]	[0.5]	[-1.9]	[-1.5]
物	北海道	3,243	2,648	98	51	82	364
	[前月比]	[-5.1]	[-5.4]	[-4.9]	[0.0]	[-8.9]	[-2.9]
件	東北	12,337	9,996	466	187	234	1,454
	[前月比]	[-3.5]	[-4.2]	[-2.3]	[4.5]	[5.9]	[-1.5]
別	関東甲信越	14,238	10,513	776	439	545	1,965
	[前月比]	[-2.1]	[-2.8]	[-0.8]	[0.9]	[-0.9]	[-0.1]
賃	首都圏	248,053	197,696	7,518	1,338	3,209	38,292
	[前月比]	[-3.5]	[-4.0]	[0.2]	[-0.6]	[-2.0]	[-2.0]
物	中部4県	8,160	4,831	573	260	579	1,917
	[前月比]	[-1.2]	[0.1]	[-0.9]	[-1.9]	[-7.8]	[-2.4]
件	中部圏	10,120	6,211	512	562	490	2,345
	[前月比]	[3.6]	[5.6]	[2.6]	[1.8]	[0.2]	[0.0]
別	近畿圏	100,983	73,948	5,611	1,053	3,427	16,944
	[前月比]	[-0.5]	[-0.2]	[-1.7]	[-0.9]	[-1.9]	[-0.9]
賃	中国	8,066	4,854	805	277	356	1,774
	[前月比]	[0.4]	[-0.2]	[3.3]	[1.8]	[-5.6]	[1.8]
物	四国	2,651	1,410	307	108	167	659
	[前月比]	[1.3]	[0.4]	[4.4]	[0.9]	[7.1]	[0.6]
件	九州	20,036	13,617	1,250	589	863	3,717
	[前月比]	[-3.2]	[-4.3]	[0.7]	[3.0]	[-0.8]	[-2.1]