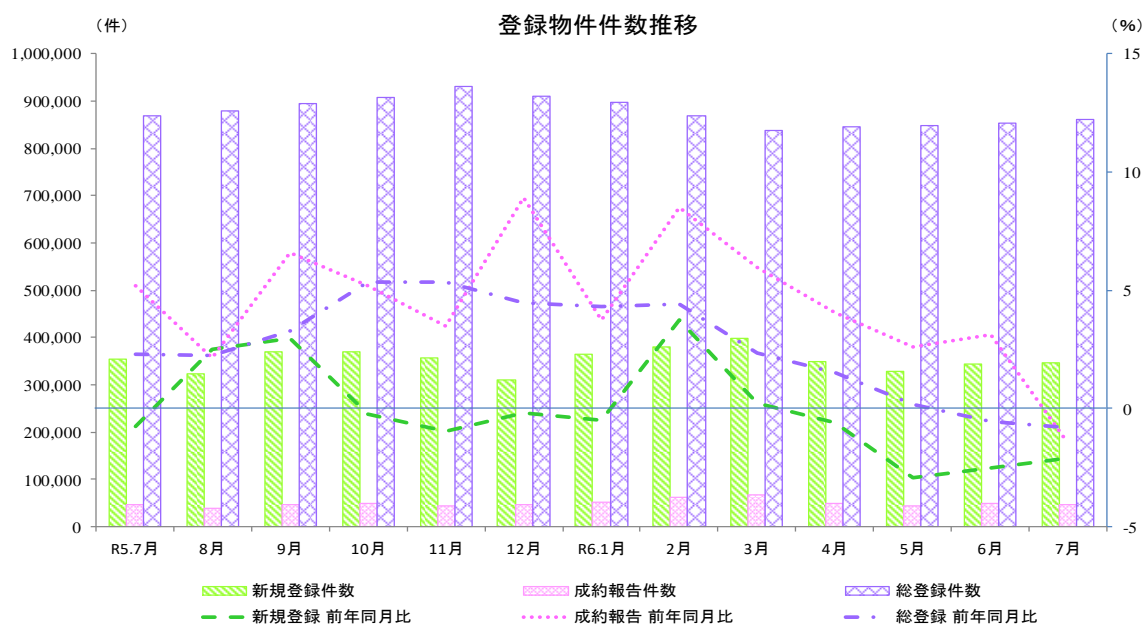


## 指定流通機構の活用状況について（令和6年7月分）

### 1. 概況

令和6年7月の指定流通機構の活用状況をみると、新規登録件数は345,963件と前年同月比で4ヶ月連続してマイナスとなり、前月比では2ヶ月連続してプラスとなった。成約報告件数は46,729件と前年同月比で15ヶ月ぶりにマイナスに転じ、前月比ではふたたびマイナスに転じた。総登録件数は862,008件と前年同月比で2ヶ月連続してマイナスとなり、前月比では4ヶ月連続してプラスとなった。



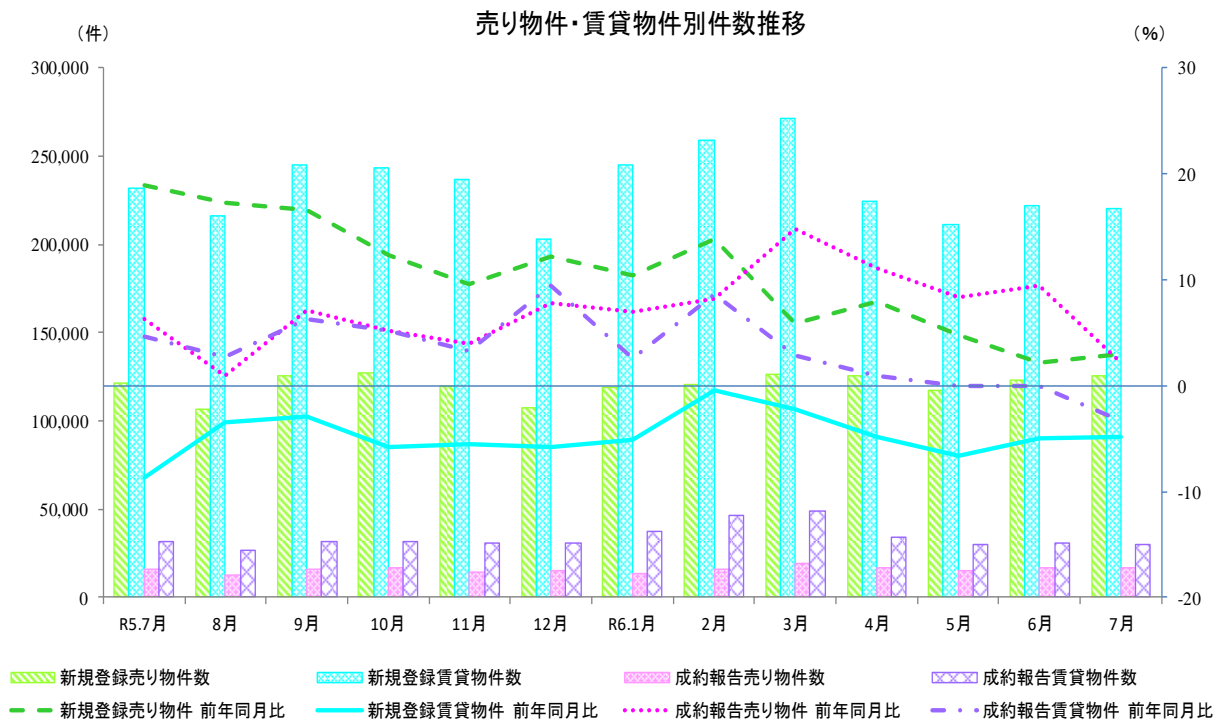
#### 物件件数の推移

	R5.7月	8月	9月	10月	11月	12月	R6.1月	2月	3月	4月	5月	6月	7月
新規登録件数(件)	353,411	322,993	370,932	370,954	356,909	310,083	364,222	380,000	398,141	349,618	328,791	345,321	345,963
前年同月比(%)	▲0.8	2.5	3.0	▲0.3	▲0.9	▲0.2	▲0.5	3.7	0.2	▲0.6	▲2.9	▲2.5	▲2.1
前月比(%)	▲0.2	▲8.6	14.8	0.0	▲3.8	▲13.1	17.5	4.3	4.8	▲12.2	▲6.0	5.0	0.2
成約報告件数(件)	47,404	38,859	47,790	48,408	45,001	45,512	50,983	62,390	68,227	50,262	44,925	48,165	46,729
前年同月比(%)	5.2	2.1	6.6	5.2	3.5	8.9	3.7	8.5	6.0	4.1	2.6	3.1	▲1.4
前月比(%)	1.5	▲18.0	23.0	1.3	▲7.0	1.1	12.0	22.4	9.4	▲26.3	▲10.6	7.2	▲3.0
総登録件数(件)	868,978	878,928	895,648	907,620	930,148	911,170	896,472	869,162	837,673	845,147	848,370	853,736	862,008
前年同月比(%)	2.3	2.3	3.3	5.3	5.4	4.5	4.3	4.4	2.3	1.5	0.2	▲0.5	▲0.8
前月比(%)	1.2	1.1	1.9	1.3	2.5	▲2.0	▲1.6	▲3.0	▲3.6	0.9	0.4	0.6	1.0

## 2. 売り・賃貸別物件数

令和6年7月の売り物件数をみると、新規登録件数は125,209件と前年同月比で19ヶ月連続してプラスとなり、前月比では2ヶ月連続してプラスとなった。成約報告件数は16,467件と前年同月比で14ヶ月連続してプラスとなり、前月比ではふたたびマイナスに転じた。総登録件数は418,537件と前年同月比で26ヶ月連続してプラスとなり、前月比では4ヶ月連続してプラスとなった。

令和6年7月の賃貸物件数をみると、新規登録件数は220,754件と前年同月比で29ヶ月連続してマイナスとなり、前月比ではふたたびマイナスに転じた。成約報告件数は30,262件と前年同月比で3ヶ月連続してマイナスとなり、前月比ではふたたびマイナスに転じた。総登録件数は443,471件と前年同月比で23ヶ月連続してマイナスとなり、前月比では4ヶ月連続してプラスとなった。



### R6年7月 売り物件・賃貸物件別件数

<b>新規登録件数</b>	345,963 件	前年同月比	▲ 2.1 %	⇒	前月比	0.2 %	⇒
売り物件	125,209 件	前年同月比	3.0 %	⇒	前月比	1.6 %	⇒
賃貸物件	220,754 件	前年同月比	▲ 4.8 %	⇒	前月比	▲ 0.6 %	⇒
<b>成約報告件数</b>	46,729 件	前年同月比	▲ 1.4 %	⇒	前月比	▲ 3.0 %	⇒
売り物件	16,467 件	前年同月比	2.2 %	⇒	前月比	▲ 4.0 %	⇒
賃貸物件	30,262 件	前年同月比	▲ 3.3 %	⇒	前月比	▲ 2.4 %	⇒
<b>総登録件数</b>	862,008 件	前年同月比	▲ 0.8 %	⇒	前月比	1.0 %	⇒
売り物件	418,537 件	前年同月比	11.1 %	↑	前月比	0.5 %	⇒
賃貸物件	443,471 件	前年同月比	▲ 9.9 %	⇒	前月比	1.4 %	⇒

凡例: ↑ 10% ~    ⇒ 3% ~ 10%    ⇒ -3% ~ 3%    ⇒ -10% ~ -3%    ↓ ~ -10%

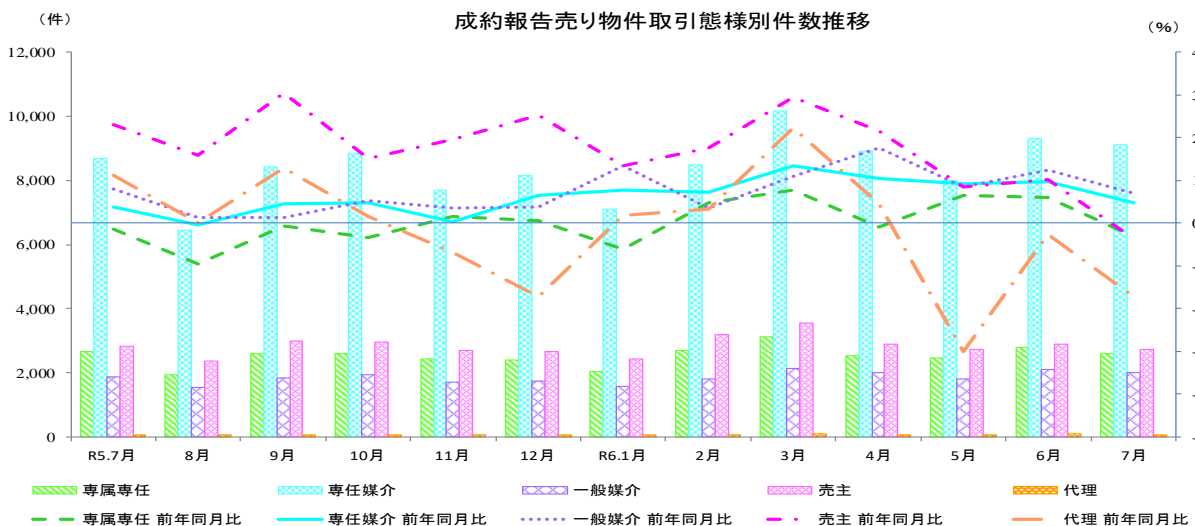
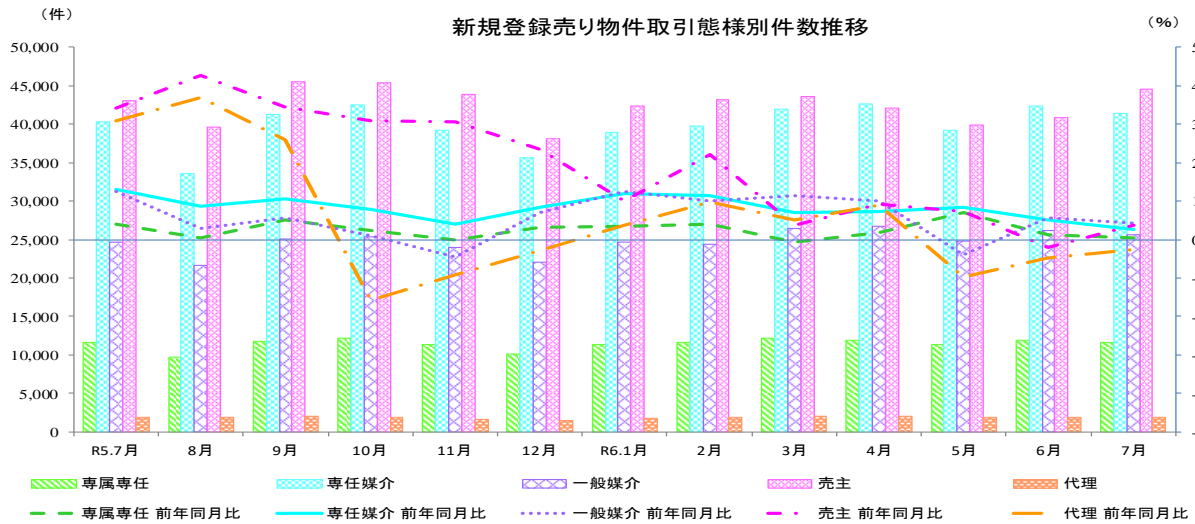
### 3. 売り物件の取引態様別物件数

令和6年7月の新規登録売り物件の取引態様別をみると、売主は35.6%を占め、次いで専任媒介は33.1%を占めている。成約報告売り物件の取引態様別をみると、専任媒介は55.4%を占め、次いで売主は16.5%を占めている。

R6年7月 売り物件の取引態様別件数

	取引態様	件数	構成比	前年同月比	前月比
新規登録件数	媒介契約	78,719 件	62.9 %	2.8 % ➡	▲ 2.2 % ➡
	専属専任	11,629 件	9.3 %	0.3 % ➡	▲ 2.0 % ➡
	専任媒介	41,410 件	33.1 %	2.7 % ➡	▲ 2.4 % ➡
	一般媒介	25,680 件	20.5 %	4.1 % ➡	▲ 1.8 % ➡
	売主	44,599 件	35.6 %	3.7 % ➡	9.0 % ➡
	代理	1,891 件	1.5 %	▲ 2.6 % ➡	▲ 0.9 % ➡
成約報告件数	媒介契約	13,696 件	83.2 %	3.5 % ➡	▲ 3.4 % ➡
	専属専任	2,578 件	15.7 %	▲ 3.2 % ➡	▲ 7.1 % ➡
	専任媒介	9,115 件	55.4 %	4.9 % ➡	▲ 2.1 % ➡
	一般媒介	2,003 件	12.2 %	6.9 % ➡	▲ 4.2 % ➡
	売主	2,713 件	16.5 %	▲ 3.7 % ➡	▲ 6.4 % ➡
	代理	58 件	0.4 %	▲ 17.1 % ↓	▲ 24.7 % ↓

凡例: ↑ 10% ~   ➡ 3% ~ 10%   ➡ -3% ~ 3%   ➡ -10% ~ -3%   ↓ ~ -10%



## 指定流通機構実態調査集計、総括表 新規登録件数

		総 数	物 件 種 別				
			マンション	一 戸 建	土 地	住宅外全部	住宅外一部
全 総計件数		345,963	230,210	51,407	33,603	10,079	20,664
[前月比]		[ 0.2 ]	[ -0.7 ]	[ 5.6 ]	[ -0.6 ]	[ 1.8 ]	[ -2.6 ]
売 地	総 計	125,209	40,708	43,840	32,744	7,251	666
	[前月比]	[ 1.6 ]	[ -1.6 ]	[ 6.1 ]	[ -0.5 ]	[ 1.8 ]	[ 17.3 ]
	北海道	4,779	1,415	1,442	1,480	432	10
	[前月比]	[ 5.3 ]	[ 8.5 ]	[ 8.8 ]	[ -0.8 ]	[ 5.6 ]	[ 42.9 ]
	東北	5,159	831	2,333	1,672	316	7
	[前月比]	[ 4.2 ]	[ -8.3 ]	[ 19.0 ]	[ -5.5 ]	[ 2.9 ]	[ -12.5 ]
	関東甲信越	7,143	542	2,697	3,344	548	12
	[前月比]	[ 5.4 ]	[ -14.0 ]	[ 11.0 ]	[ 5.8 ]	[ 2.6 ]	[ -47.8 ]
	首都圏	57,230	25,019	18,100	10,435	3,267	409
	[前月比]	[ 1.2 ]	[ -1.3 ]	[ 4.8 ]	[ -0.9 ]	[ 6.9 ]	[ 16.5 ]
	中部4県	5,107	615	1,873	2,262	327	30
	[前月比]	[ 9.5 ]	[ -2.4 ]	[ 11.1 ]	[ 11.9 ]	[ 5.5 ]	[ 66.7 ]
	中部圏	8,837	1,891	3,119	3,291	515	21
	[前月比]	[ 5.3 ]	[ -0.3 ]	[ 13.1 ]	[ 2.4 ]	[ 1.4 ]	[ 31.3 ]
	近畿圏	21,732	7,071	8,781	4,811	941	128
	[前月比]	[ 4.4 ]	[ 0.0 ]	[ 10.9 ]	[ 0.8 ]	[ -1.8 ]	[ 25.5 ]
	中国	3,955	533	1,528	1,643	244	7
	[前月比]	[ 8.4 ]	[ -0.6 ]	[ 0.3 ]	[ 20.0 ]	[ 15.6 ]	[ -36.4 ]
	四国	1,496	213	555	616	105	7
[前月比]	[ -56.3 ]	[ -59.7 ]	[ -51.3 ]	[ -58.3 ]	[ -62.5 ]	[ - ]	
九州	9,771	2,578	3,412	3,190	556	35	
[前月比]	[ 2.4 ]	[ 1.8 ]	[ 2.9 ]	[ 2.5 ]	[ 1.6 ]	[ 9.4 ]	
取 引 態 様 別	専属専任	11,629	4,173	3,443	3,088	884	41
	[前月比]	[ -2.0 ]	[ -4.2 ]	[ 1.7 ]	[ -3.4 ]	[ 0.7 ]	[ -18.0 ]
	専任媒介	41,410	13,174	13,042	12,510	2,501	183
	[前月比]	[ -2.4 ]	[ -3.5 ]	[ -2.9 ]	[ -2.4 ]	[ 5.9 ]	[ 3.4 ]
	一般媒介	25,680	7,341	7,626	8,054	2,501	158
	[前月比]	[ -1.8 ]	[ -4.0 ]	[ -1.7 ]	[ 0.7 ]	[ -3.8 ]	[ 1.9 ]
売主	44,599	15,211	19,274	8,722	1,126	266	
[前月比]	[ 9.0 ]	[ 1.7 ]	[ 18.6 ]	[ 2.4 ]	[ 8.4 ]	[ 53.8 ]	
代理	1,891	809	455	370	239	18	
[前月比]	[ -0.9 ]	[ 6.0 ]	[ -9.4 ]	[ -4.4 ]	[ -1.6 ]	[ 38.5 ]	
賃 地	総 計	220,754	189,502	7,567	859	2,828	19,998
	[前月比]	[ -0.6 ]	[ -0.4 ]	[ 2.9 ]	[ -4.9 ]	[ 1.8 ]	[ -3.1 ]
	北海道	1,659	1,527	35	6	16	75
	[前月比]	[ -8.6 ]	[ -7.7 ]	[ 45.8 ]	[ -71.4 ]	[ 0.0 ]	[ -24.2 ]
	東北	4,386	3,895	159	32	59	241
	[前月比]	[ -24.7 ]	[ -27.1 ]	[ -5.9 ]	[ 33.3 ]	[ -1.7 ]	[ 4.8 ]
	関東甲信越	7,317	6,386	299	74	98	460
	[前月比]	[ -11.0 ]	[ -13.6 ]	[ 9.5 ]	[ 34.5 ]	[ -19.7 ]	[ 22.3 ]
	首都圏	153,072	134,716	3,900	287	1,209	12,960
	[前月比]	[ 1.1 ]	[ 1.4 ]	[ 2.8 ]	[ -9.5 ]	[ 11.3 ]	[ -3.5 ]
	中部4県	2,174	1,453	197	42	138	344
	[前月比]	[ -8.5 ]	[ -10.6 ]	[ -15.1 ]	[ 0.0 ]	[ 13.1 ]	[ -3.4 ]
	中部圏	2,746	1,999	186	86	119	356
	[前月比]	[ -16.9 ]	[ -14.6 ]	[ 25.7 ]	[ -14.0 ]	[ 28.0 ]	[ -42.9 ]
	近畿圏	38,945	31,641	1,998	206	887	4,213
	[前月比]	[ 0.7 ]	[ 0.5 ]	[ 6.8 ]	[ -2.8 ]	[ -6.6 ]	[ 1.5 ]
	中国	2,038	1,263	243	30	89	413
	[前月比]	[ 9.7 ]	[ 2.9 ]	[ -0.4 ]	[ 11.1 ]	[ 34.8 ]	[ 41.0 ]
	四国	620	406	97	12	22	83
[前月比]	[ -43.9 ]	[ -44.6 ]	[ -36.2 ]	[ -7.7 ]	[ -40.5 ]	[ -51.2 ]	
九州	7,797	6,216	453	84	191	853	
[前月比]	[ 5.1 ]	[ 8.1 ]	[ 1.3 ]	[ -8.7 ]	[ -15.1 ]	[ -5.7 ]	

\* 前月比欄の数値は、対前月増減率である。

\* 「関東甲信越」は、茨城県・栃木県・群馬県・新潟県・山梨県・長野県、「首都圏」は、東京都・千葉県・埼玉県・神奈川県、「中部圏」は、愛知県・岐阜県・三重県、「中部4県」は、富山県・石川県・福井県・静岡県、「近畿圏」は、大阪府・京都府・兵庫県・滋賀県・奈良県・和歌山県をいう。

指定流通機構実態調査 売り物件・新規登録件数 時系列表

	5年7月	5年8月	5年9月	5年10月	5年11月	5年12月	6年1月	6年2月	6年3月	6年4月	6年5月	6年6月	6年7月	一年間計
	件数	件数	件数	件数	件数	件数	件数	件数	件数	件数	件数	件数	件数	件数
	(前月比)	(前月比)	(前月比)	(前月比)	(前月比)	(前月比)	(前月比)	(前月比)	(前月比)	(前月比)	(前月比)	(前月比)	(前月比)	(前月比)
総数	121,526 (0.7) [18.9]	106,472 (-12.4) [17.3]	125,729 (18.1) [16.6]	127,306 (1.3) [12.3]	120,080 (-5.7) [9.6]	107,208 (-10.7) [12.2]	118,996 (11.0) [10.5]	120,794 (1.5) [13.8]	126,273 (4.5) [5.8]	125,446 (-0.7) [7.9]	117,118 (-6.6) [4.7]	123,295 (5.3) [2.2]	125,209 (1.6) [3.0]	1,443,926
北海道	4,740 (-0.1) [28.9]	3,985 (-15.9) [22.7]	4,906 (23.1) [21.8]	4,894 (-0.2) [17.0]	4,729 (-3.4) [24.8]	3,941 (-16.7) [13.7]	3,962 (0.5) [9.0]	3,870 (-2.3) [9.0]	4,111 (6.2) [0.2]	4,606 (12.0) [7.5]	4,203 (-8.7) [-1.6]	4,537 (7.9) [-4.4]	4,779 (5.3) [0.8]	52,523 (3.6)
東北	4,570 (1.5) [18.7]	4,168 (-8.8) [14.9]	4,675 (12.2) [15.9]	4,848 (3.7) [19.4]	4,286 (-11.6) [15.8]	4,021 (-6.2) [13.2]	4,028 (0.2) [19.5]	4,596 (14.1) [31.3]	5,032 (9.5) [26.3]	4,512 (-10.3) [3.6]	4,484 (-0.6) [-1.3]	4,951 (10.4) [10.0]	5,159 (4.2) [12.9]	54,760 (3.8)
関東甲信越	6,854 (-0.1) [1.8]	6,199 (-9.6) [-4.7]	7,389 (19.2) [19.2]	7,264 (-1.7) [-1.7]	6,405 (-11.8) [-7.4]	6,138 (-4.2) [15.5]	6,344 (3.4) [11.1]	5,962 (-6.0) [7.5]	6,827 (14.5) [9.5]	6,481 (-5.1) [1.0]	6,518 (0.6) [-4.5]	6,778 (4.0) [-1.2]	7,143 (5.4) [4.2]	79,448 (5.5)
圏	58,158 (1.9) [26.2]	50,383 (-13.4) [28.7]	58,783 (16.7) [20.1]	60,289 (2.6) [16.5]	57,455 (-4.7) [25.6]	48,969 (-14.8) [11.1]	55,949 (14.3) [8.4]	58,168 (4.0) [13.7]	58,982 (1.4) [3.0]	58,612 (-0.6) [6.2]	53,772 (-8.3) [7.0]	56,541 (5.1) [-1.0]	57,230 (1.2) [-1.6]	675,133 (46.8)
別	4,633 (4.3) [16.8]	4,302 (-7.1) [9.0]	4,510 (4.8) [1.9]	4,821 (6.9) [7.0]	4,487 (-6.9) [-38.4]	4,150 (-7.5) [13.8]	4,344 (4.7) [4.1]	4,309 (-0.8) [9.9]	4,691 (8.9) [1.4]	5,020 (7.0) [13.2]	4,414 (-12.1) [-7.4]	4,666 (5.7) [5.1]	5,107 (9.5) [10.2]	54,821 (3.8)
内	8,415 (2.0) [8.4]	7,303 (-13.2) [3.7]	9,132 (25.0) [16.3]	9,084 (-0.5) [4.3]	8,406 (-7.5) [10.7]	8,121 (-3.4) [9.8]	8,781 (8.1) [6.7]	8,394 (-4.4) [11.3]	9,139 (8.9) [6.6]	9,303 (1.8) [11.5]	8,147 (-12.4) [-0.9]	8,390 (3.0) [1.7]	8,837 (5.3) [5.0]	103,037 (7.1)
近畿圏	20,251 (2.2) [15.1]	17,315 (-14.5) [17.4]	21,335 (23.2) [16.7]	21,490 (0.7) [15.5]	19,949 (-7.2) [18.0]	18,102 (-9.3) [16.9]	20,923 (15.6) [15.5]	21,316 (1.9) [15.8]	22,303 (4.6) [11.4]	21,772 (-2.4) [12.3]	20,294 (-6.8) [11.5]	20,818 (2.6) [5.1]	21,732 (4.4) [7.3]	247,349 (17.1)
中国	3,542 (-1.1) [-3.4]	3,115 (-12.1) [-2.9]	3,621 (16.2) [2.7]	3,647 (0.7) [-1.0]	3,626 (-0.6) [-55.9]	3,243 (-10.6) [-1.8]	3,659 (12.8) [-2.3]	3,513 (-4.0) [-2.6]	3,616 (2.9) [-4.2]	3,935 (8.8) [11.5]	3,667 (-6.8) [5.7]	3,650 (-0.5) [2.0]	3,955 (8.4) [11.7]	43,247 (3.0)
四国	1,387 (-35.8) [8.1]	1,281 (-7.6) [-22.4]	2,004 (56.4) [60.2]	1,455 (-27.4) [11.9]	1,446 (-0.6) [-4.0]	1,865 (29.0) [-0.9]	1,267 (-32.1) [11.5]	1,330 (5.0) [7.4]	1,504 (13.1) [-25.2]	1,428 (-5.1) [5.3]	2,244 (57.1) [49.1]	3,424 (52.6) [58.5]	1,496 (-56.3) [7.9]	20,744 (1.4)
九州	8,976 (-2.3) [17.9]	8,421 (-6.2) [10.0]	9,374 (11.3) [16.5]	9,514 (1.5) [7.6]	9,291 (-2.3) [16.8]	8,658 (-6.8) [17.0]	9,739 (12.5) [21.5]	9,336 (-4.1) [22.3]	10,068 (7.8) [15.4]	9,777 (-2.9) [9.1]	9,375 (-4.1) [-4.3]	9,540 (1.8) [3.8]	9,771 (2.4) [8.9]	112,864 (7.8)
取	11,590 (-1.2) [4.1]	9,750 (-15.9) [0.5]	11,815 (21.2) [5.1]	12,132 (2.7) [2.3]	11,399 (-6.0) [-0.2]	10,162 (-10.9) [3.1]	11,375 (11.9) [3.4]	11,611 (2.1) [4.1]	12,202 (5.1) [-0.8]	11,917 (-2.3) [1.9]	11,368 (-4.6) [7.0]	11,866 (4.4) [1.1]	11,629 (-2.0) [0.3]	137,226 (9.5)
引	40,309 (-0.2) [13.0]	33,599 (-16.6) [8.7]	41,302 (22.9) [10.6]	42,447 (2.8) [7.9]	39,243 (-7.5) [4.0]	35,578 (-9.3) [8.3]	38,892 (9.3) [12.1]	39,801 (2.3) [11.4]	42,016 (5.6) [6.9]	42,636 (1.5) [7.2]	39,270 (-7.9) [8.4]	42,430 (8.0) [5.1]	41,410 (-2.4) [2.7]	478,624 (33.1)
態	24,659 (-0.4) [12.6]	21,623 (-12.3) [3.0]	25,055 (15.9) [5.6]	25,383 (1.3) [0.9]	23,930 (-5.7) [-4.5]	21,998 (-8.1) [7.0]	24,632 (12.0) [12.6]	24,344 (-1.2) [9.9]	26,479 (8.8) [11.4]	26,769 (1.1) [10.0]	24,753 (-7.5) [-3.9]	26,161 (5.7) [5.6]	25,680 (-1.8) [4.1]	296,807 (20.6)
別	43,027 (3.1) [34.2]	39,621 (-7.9) [42.6]	45,486 (14.8) [34.4]	45,435 (-0.1) [30.8]	43,888 (-3.4) [30.6]	38,058 (-13.3) [23.6]	42,367 (11.3) [10.1]	43,172 (1.9) [22.0]	43,540 (0.9) [3.6]	42,097 (-3.3) [9.2]	39,898 (-5.2) [7.2]	40,930 (2.6) [-2.0]	44,599 (9.0) [3.7]	509,091 (35.3)
代理	1,941 (-3.2) [30.9]	1,879 (-3.2) [37.0]	2,071 (10.2) [26.0]	1,909 (-7.8) [-15.6]	1,620 (-15.1) [-9.3]	1,412 (-12.8) [-2.8]	1,730 (22.5) [3.7]	1,866 (7.9) [9.9]	2,036 (9.1) [5.2]	2,027 (-0.4) [8.8]	1,829 (-9.8) [-9.9]	1,908 (4.3) [-4.8]	1,891 (-0.9) [-2.6]	22,178 (1.5)
物	43,379 (1.5) [18.6]	37,250 (-14.1) [17.6]	43,516 (16.8) [14.5]	43,611 (0.2) [5.4]	41,337 (-5.2) [14.5]	36,569 (-11.5) [4.8]	41,624 (13.8) [4.9]	42,382 (1.8) [5.8]	44,079 (4.0) [0.3]	43,425 (-1.5) [2.0]	39,449 (-9.2) [0.7]	41,372 (4.9) [-3.2]	40,708 (-1.6) [-6.2]	495,322 (34.3)
件	40,548 (1.5) [22.2]	35,978 (-11.3) [22.4]	43,141 (19.9) [21.4]	43,597 (1.1) [17.6]	41,414 (-5.0) [13.4]	37,109 (-10.4) [20.3]	39,757 (7.1) [12.9]	41,179 (3.6) [21.3]	42,443 (3.1) [7.9]	41,345 (-2.6) [11.5]	39,074 (-5.5) [8.3]	41,321 (5.8) [3.4]	43,840 (6.1) [8.1]	490,198 (33.9)
種	30,589 (-0.8) [15.0]	27,120 (-11.3) [10.9]	32,013 (18.0) [13.6]	32,613 (1.9) [14.9]	30,298 (-7.1) [-1.6]	27,410 (-9.5) [12.3]	30,878 (12.7) [15.8]	29,957 (-3.0) [15.4]	32,088 (7.1) [10.2]	32,885 (2.5) [11.1]	30,920 (-6.0) [2.0]	32,913 (6.4) [6.7]	32,744 (-0.5) [7.0]	371,839 (25.8)
別	6,422 (0.4) [20.1]	5,630 (-12.3) [18.6]	6,414 (13.9) [15.5]	6,804 (6.1) [14.0]	6,449 (-5.2) [12.5]	5,593 (-13.3) [13.5]	6,121 (9.4) [7.7]	6,621 (8.2) [18.3]	7,047 (6.4) [13.4]	7,184 (1.9) [13.0]	7,066 (-1.6) [24.5]	7,121 (0.8) [11.3]	7,251 (1.8) [12.9]	79,301 (5.5)
住宅外(一部)	588 (-17.1) [9.5]	494 (-16.0) [1.2]	645 (30.6) [20.8]	681 (5.6) [16.0]	582 (-14.5) [22.8]	527 (-9.5) [21.7]	616 (16.9) [22.5]	655 (6.3) [13.7]	616 (-6.0) [-11.9]	607 (-1.5) [-5.5]	609 (0.3) [0.0]	588 (-6.7) [-19.9]	666 (17.3) [13.3]	7,266 (0.5)

※ 構成比は、四捨五入による端数処理のため内数の合計が100%にならないことがある

指定流通機構実態調査集計、総括表 地域別取引態様別売物件月間新規登録件数

地域	取引態様	総数	物件種別				
			マンション	一戸建	土地	住宅外全部	住宅外一部
北海道	専属専任 [構成比]	423 [ 8.9]	116 [ 8.2]	108 [ 7.5]	143 [ 9.7]	55 [ 12.7]	1 [ 10.0]
	専任媒介 [構成比]	2,296 [ 48.0]	452 [ 31.9]	801 [ 55.5]	833 [ 56.3]	205 [ 47.5]	5 [ 50.0]
	一般媒介 [構成比]	927 [ 19.4]	172 [ 12.2]	274 [ 19.0]	332 [ 22.4]	147 [ 34.0]	2 [ 20.0]
	売主 [構成比]	1,116 [ 23.4]	672 [ 47.5]	255 [ 17.7]	168 [ 11.4]	19 [ 4.4]	2 [ 20.0]
	代理 [構成比]	17 [ 0.4]	3 [ 0.2]	4 [ 0.3]	4 [ 0.3]	6 [ 1.4]	0 [ 0.0]
	合計 [地域比]	4,779 [ 3.8]	1,415 [ 3.5]	1,442 [ 3.3]	1,480 [ 4.5]	432 [ 6.0]	10 [ 1.5]
東北	専属専任 [構成比]	316 [ 6.1]	60 [ 7.2]	81 [ 3.5]	110 [ 6.6]	64 [ 20.3]	1 [ 14.3]
	専任媒介 [構成比]	1,640 [ 31.8]	271 [ 32.6]	604 [ 25.9]	660 [ 39.5]	102 [ 32.3]	3 [ 42.9]
	一般媒介 [構成比]	1,211 [ 23.5]	130 [ 15.6]	420 [ 18.0]	538 [ 32.2]	120 [ 38.0]	3 [ 42.9]
	売主 [構成比]	1,955 [ 37.9]	368 [ 44.3]	1,218 [ 52.2]	344 [ 20.6]	25 [ 7.9]	0 [ 0.0]
	代理 [構成比]	37 [ 0.7]	2 [ 0.2]	10 [ 0.4]	20 [ 1.2]	5 [ 1.6]	0 [ 0.0]
	合計 [地域比]	5,159 [ 4.1]	831 [ 2.0]	2,333 [ 5.3]	1,672 [ 5.1]	316 [ 4.4]	7 [ 1.1]
関東甲信越	専属専任 [構成比]	419 [ 5.9]	42 [ 7.7]	115 [ 4.3]	215 [ 6.4]	47 [ 8.6]	0 [ 0.0]
	専任媒介 [構成比]	2,478 [ 34.7]	200 [ 36.9]	919 [ 34.1]	1,151 [ 34.4]	201 [ 36.7]	7 [ 58.3]
	一般媒介 [構成比]	2,057 [ 28.8]	146 [ 26.9]	574 [ 21.3]	1,086 [ 32.5]	248 [ 45.3]	3 [ 25.0]
	売主 [構成比]	2,106 [ 29.5]	149 [ 27.5]	1,055 [ 39.1]	855 [ 25.6]	45 [ 8.2]	2 [ 16.7]
	代理 [構成比]	83 [ 1.2]	5 [ 0.9]	34 [ 1.3]	37 [ 1.1]	7 [ 1.3]	0 [ 0.0]
	合計 [地域比]	7,143 [ 5.7]	542 [ 1.3]	2,697 [ 6.2]	3,344 [ 10.2]	548 [ 7.6]	12 [ 1.8]
首都圏	専属専任 [構成比]	4,484 [ 7.8]	2,348 [ 9.4]	948 [ 5.2]	856 [ 8.2]	307 [ 9.4]	25 [ 6.1]
	専任媒介 [構成比]	16,867 [ 29.5]	7,154 [ 28.6]	4,782 [ 26.4]	3,789 [ 36.3]	1,051 [ 32.2]	91 [ 22.2]
	一般媒介 [構成比]	7,606 [ 13.3]	3,598 [ 14.4]	1,541 [ 8.5]	1,443 [ 13.8]	939 [ 28.7]	85 [ 20.8]
	売主 [構成比]	26,968 [ 47.1]	11,245 [ 44.9]	10,554 [ 58.3]	4,180 [ 40.1]	793 [ 24.3]	196 [ 47.9]
	代理 [構成比]	1,305 [ 2.3]	674 [ 2.7]	275 [ 1.5]	167 [ 1.6]	177 [ 5.4]	12 [ 2.9]
	合計 [地域比]	57,230 [ 45.7]	25,019 [ 61.5]	18,100 [ 41.3]	10,435 [ 31.9]	3,267 [ 45.1]	409 [ 61.4]
中部四県	専属専任 [構成比]	535 [ 10.5]	29 [ 4.7]	195 [ 10.4]	254 [ 11.2]	56 [ 17.1]	1 [ 3.3]
	専任媒介 [構成比]	1,822 [ 35.7]	244 [ 39.7]	560 [ 29.9]	885 [ 39.1]	130 [ 39.8]	3 [ 10.0]
	一般媒介 [構成比]	1,746 [ 34.2]	233 [ 37.9]	581 [ 31.0]	815 [ 36.0]	112 [ 34.3]	5 [ 16.7]
	売主 [構成比]	959 [ 18.8]	103 [ 16.7]	528 [ 28.2]	282 [ 12.5]	25 [ 7.6]	21 [ 70.0]
	代理 [構成比]	45 [ 0.9]	6 [ 1.0]	9 [ 0.5]	26 [ 1.1]	4 [ 1.2]	0 [ 0.0]
	合計 [地域比]	5,107 [ 4.1]	615 [ 1.5]	1,873 [ 4.3]	2,262 [ 6.9]	327 [ 4.5]	30 [ 4.5]
中部圏	専属専任 [構成比]	631 [ 7.1]	191 [ 10.1]	167 [ 5.4]	227 [ 6.9]	45 [ 8.7]	1 [ 4.8]
	専任媒介 [構成比]	3,106 [ 35.1]	762 [ 40.3]	850 [ 27.3]	1,294 [ 39.3]	193 [ 37.5]	7 [ 33.3]
	一般媒介 [構成比]	2,389 [ 27.0]	421 [ 22.3]	599 [ 19.2]	1,132 [ 34.4]	225 [ 43.7]	12 [ 57.1]
	売主 [構成比]	2,672 [ 30.2]	505 [ 26.7]	1,494 [ 47.9]	625 [ 19.0]	47 [ 9.1]	1 [ 4.8]
	代理 [構成比]	39 [ 0.4]	12 [ 0.6]	9 [ 0.3]	13 [ 0.4]	5 [ 1.0]	0 [ 0.0]
	合計 [地域比]	8,837 [ 7.1]	1,891 [ 4.6]	3,119 [ 7.1]	3,291 [ 10.1]	515 [ 7.1]	21 [ 3.2]
近畿圏	専属専任 [構成比]	3,583 [ 16.5]	1,098 [ 15.5]	1,459 [ 16.6]	841 [ 17.5]	176 [ 18.7]	9 [ 7.0]
	専任媒介 [構成比]	6,921 [ 31.8]	2,607 [ 36.9]	2,381 [ 27.1]	1,583 [ 32.9]	307 [ 32.0]	43 [ 33.6]
	一般媒介 [構成比]	4,911 [ 22.6]	1,717 [ 24.3]	1,895 [ 21.6]	967 [ 20.1]	301 [ 32.0]	31 [ 24.2]
	売主 [構成比]	6,040 [ 27.8]	1,557 [ 22.0]	2,955 [ 33.7]	1,361 [ 28.3]	128 [ 13.6]	39 [ 30.5]
	代理 [構成比]	277 [ 1.3]	92 [ 1.3]	91 [ 1.0]	59 [ 1.2]	29 [ 3.1]	6 [ 4.7]
	合計 [地域比]	21,732 [ 17.4]	7,071 [ 17.4]	8,781 [ 20.0]	4,811 [ 14.7]	941 [ 13.0]	128 [ 19.2]
中国	専属専任 [構成比]	254 [ 6.4]	34 [ 6.4]	94 [ 6.2]	78 [ 4.7]	47 [ 19.3]	1 [ 14.3]
	専任媒介 [構成比]	1,956 [ 49.5]	286 [ 53.7]	793 [ 51.9]	784 [ 47.7]	90 [ 36.9]	3 [ 42.9]
	一般媒介 [構成比]	1,093 [ 27.6]	125 [ 23.5]	406 [ 26.6]	467 [ 28.4]	93 [ 38.1]	2 [ 28.6]
	売主 [構成比]	639 [ 16.2]	88 [ 16.5]	229 [ 15.0]	307 [ 18.7]	14 [ 5.7]	1 [ 14.3]
	代理 [構成比]	13 [ 0.3]	0 [ 0.0]	6 [ 0.4]	7 [ 0.4]	0 [ 0.0]	0 [ 0.0]
	合計 [地域比]	3,955 [ 3.2]	533 [ 1.3]	1,528 [ 3.5]	1,643 [ 5.0]	244 [ 3.4]	7 [ 1.1]
四国	専属専任 [構成比]	136 [ 9.1]	7 [ 3.3]	48 [ 8.6]	72 [ 11.7]	9 [ 8.6]	0 [ 0.0]
	専任媒介 [構成比]	494 [ 33.0]	108 [ 50.7]	158 [ 28.5]	195 [ 31.7]	30 [ 28.6]	3 [ 42.9]
	一般媒介 [構成比]	537 [ 35.9]	58 [ 27.2]	160 [ 28.8]	253 [ 41.1]	64 [ 61.0]	2 [ 28.6]
	売主 [構成比]	323 [ 21.6]	39 [ 18.3]	188 [ 33.9]	92 [ 14.9]	2 [ 1.9]	2 [ 28.6]
	代理 [構成比]	6 [ 0.4]	1 [ 0.5]	1 [ 0.2]	4 [ 0.6]	0 [ 0.0]	0 [ 0.0]
	合計 [地域比]	1,496 [ 1.2]	213 [ 0.5]	555 [ 1.3]	616 [ 1.9]	105 [ 1.4]	7 [ 1.1]
九州	専属専任 [構成比]	848 [ 8.7]	248 [ 9.6]	228 [ 6.7]	292 [ 9.2]	78 [ 14.0]	2 [ 5.7]
	専任媒介 [構成比]	3,830 [ 39.2]	1,090 [ 42.3]	1,194 [ 35.0]	1,336 [ 41.9]	192 [ 34.5]	18 [ 51.4]
	一般媒介 [構成比]	3,203 [ 32.8]	741 [ 28.7]	1,176 [ 34.5]	1,021 [ 32.0]	252 [ 45.3]	13 [ 37.1]
	売主 [構成比]	1,821 [ 18.6]	485 [ 18.8]	798 [ 23.4]	508 [ 15.9]	28 [ 5.0]	2 [ 5.7]
	代理 [構成比]	69 [ 0.7]	14 [ 0.5]	16 [ 0.5]	33 [ 1.0]	6 [ 1.1]	0 [ 0.0]
	合計 [地域比]	9,771 [ 7.8]	2,578 [ 6.3]	3,412 [ 7.8]	3,190 [ 9.7]	556 [ 7.7]	35 [ 5.3]
全国	専属専任 [構成比]	11,629 [ 9.3]	4,173 [ 10.3]	3,443 [ 7.9]	3,088 [ 9.4]	884 [ 12.2]	41 [ 6.2]
	専任媒介 [構成比]	41,410 [ 33.1]	13,174 [ 32.4]	13,042 [ 29.7]	12,510 [ 38.2]	2,501 [ 34.5]	183 [ 27.5]
	一般媒介 [構成比]	25,680 [ 20.5]	7,341 [ 18.0]	7,626 [ 17.4]	8,054 [ 24.6]	2,501 [ 34.5]	158 [ 23.7]
	売主 [構成比]	44,599 [ 35.6]	15,211 [ 37.4]	19,274 [ 44.0]	8,722 [ 26.6]	1,126 [ 15.5]	266 [ 39.9]
	代理 [構成比]	1,891 [ 1.5]	809 [ 2.0]	455 [ 1.0]	370 [ 1.1]	239 [ 3.3]	18 [ 2.7]
	合計	125,209	40,708	43,840	32,744	7,251	666

※構成比とは地域内の取引態様別構成比で、地域比とは全国合計の地域別シェアである。

※構成比・地域比は、四捨五入による端数処理のため内数の合計が100%にならないことがある。

指定流通機構実態調査集計、総括表 月間成約件数

		総 数	物 件 種 別				
			マンション	一 戸 建	土 地	住宅外全部	住宅外一部
全	総計件数	46,729	32,643	7,134	3,791	819	2,342
	[前月比]	[-3.0]	[-2.9]	[-5.6]	[-0.6]	[-7.4]	[1.5]
売	総 計	16,467	6,334	5,908	3,688	464	73
	[前月比]	[-4.0]	[-5.3]	[-5.0]	[-1.0]	[2.0]	[30.4]
り	北海道	905	230	329	290	55	1
	[前月比]	[-4.9]	[-6.1]	[-11.3]	[0.7]	[14.6]	[-]
地	東北	719	135	356	204	24	0
	[前月比]	[1.8]	[-3.6]	[8.5]	[-5.6]	[9.1]	[-]
域	関東甲信越	662	74	329	239	15	5
	[前月比]	[-5.2]	[-34.5]	[-5.5]	[9.6]	[-16.7]	[400.0]
物	首都圏	5,937	3,222	1,643	881	146	45
	[前月比]	[-3.4]	[-2.0]	[-5.4]	[-5.8]	[-7.0]	[40.6]
別	中部4県	590	107	270	191	22	0
	[前月比]	[1.7]	[-0.9]	[-2.9]	[8.5]	[29.4]	[-100.0]
件	中部圏	1,391	381	482	473	54	1
	[前月比]	[-5.0]	[-7.3]	[-10.2]	[0.6]	[17.4]	[-]
取	近畿圏	4,038	1,528	1,617	790	87	16
	[前月比]	[-6.6]	[-9.6]	[-6.2]	[-2.0]	[1.2]	[-5.9]
引	中国	696	165	291	223	17	0
	[前月比]	[-1.7]	[-7.3]	[-7.3]	[17.4]	[-29.2]	[-100.0]
態	四国	200	48	93	52	6	1
	[前月比]	[17.0]	[23.1]	[27.4]	[-7.1]	[100.0]	[-]
様	九州	1,329	444	498	345	38	4
	[前月比]	[-4.9]	[-6.9]	[-2.7]	[-7.3]	[11.8]	[33.3]
別	専属専任	2,578	1,165	850	492	68	3
	[前月比]	[-7.1]	[-10.6]	[-5.9]	[-0.6]	[-1.4]	[-40.0]
件	専任媒介	9,115	4,012	2,774	2,054	244	31
	[前月比]	[-2.1]	[-3.2]	[-1.5]	[-0.9]	[-1.2]	[14.8]
別	一般媒介	2,003	616	715	546	115	11
	[前月比]	[-4.2]	[-8.7]	[-2.9]	[-4.7]	[21.1]	[0.0]
取	売主	2,713	523	1,546	586	30	28
	[前月比]	[-6.4]	[-2.6]	[-10.8]	[2.1]	[-26.8]	[115.4]
引	代理	58	18	23	10	7	0
	[前月比]	[-24.7]	[-40.0]	[-28.1]	[-16.7]	[133.3]	[-]
賃	総 計	30,262	26,309	1,226	103	355	2,269
	[前月比]	[-2.4]	[-2.3]	[-8.2]	[18.4]	[-17.2]	[0.8]
賃	北海道	78	57	9	5	6	1
	[前月比]	[-6.0]	[-5.0]	[0.0]	[150.0]	[-40.0]	[-50.0]
地	東北	352	271	32	1	4	44
	[前月比]	[2.9]	[4.6]	[-15.8]	[-80.0]	[33.3]	[18.9]
域	関東甲信越	434	312	58	4	7	53
	[前月比]	[-8.4]	[-6.0]	[11.5]	[-33.3]	[-50.0]	[-24.3]
物	首都圏	16,340	14,535	468	34	85	1,218
	[前月比]	[-3.3]	[-3.7]	[1.1]	[6.3]	[-33.6]	[3.0]
件	中部4県	338	218	37	4	16	63
	[前月比]	[8.0]	[7.4]	[0.0]	[300.0]	[14.3]	[8.6]
別	中部圏	522	407	18	6	24	67
	[前月比]	[25.5]	[28.8]	[-5.3]	[0.0]	[50.0]	[13.6]
賃	近畿圏	10,502	9,170	500	36	172	624
	[前月比]	[-3.3]	[-2.2]	[-17.5]	[24.1]	[-9.9]	[-5.3]
件	中国	181	103	25	3	9	41
	[前月比]	[-10.8]	[-12.0]	[4.2]	[50.0]	[-47.1]	[-4.7]
別	四国	69	41	11	1	6	10
	[前月比]	[1.5]	[5.1]	[-15.4]	[0.0]	[200.0]	[-23.1]
賃	九州	1,446	1,195	68	9	26	148
	[前月比]	[6.7]	[7.1]	[-8.1]	[200.0]	[-23.5]	[15.6]

\* 成約件数は成約報告のあった件数である。

## 指定流通機構実態調査集計、総括表 当月末総登録件数

		総 数	物 件 種 別					
			マンション	一 戸 建	土 地	住宅外全部	住宅外一部	
全	総計件数 [前月比]	862,008 [ 1.0 ]	432,425 [ 1.3 ]	151,980 [ 0.6 ]	172,134 [ 0.9 ]	32,891 [ 0.9 ]	72,578 [ -0.3 ]	
売 地  り 域  物 別  件 態 様 別	総 計 [前月比]	418,537 [ 0.5 ]	92,730 [ -0.4 ]	133,933 [ 0.6 ]	167,265 [ 0.9 ]	22,974 [ 1.0 ]	1,635 [ 0.3 ]	
	北海道 [前月比]	17,710 [ 2.6 ]	2,819 [ 0.1 ]	5,291 [ 3.9 ]	8,144 [ 2.7 ]	1,424 [ 2.9 ]	32 [ 3.2 ]	
	東北 [前月比]	21,875 [ 0.7 ]	2,179 [ 0.0 ]	7,190 [ 0.4 ]	11,185 [ 0.7 ]	1,273 [ 3.4 ]	48 [ -7.7 ]	
	関東甲信越 [前月比]	36,731 [ 1.4 ]	1,851 [ -1.0 ]	10,394 [ 1.8 ]	22,626 [ 1.3 ]	1,786 [ 1.6 ]	74 [ -8.6 ]	
	首都圏 [前月比]	124,309 [ -0.1 ]	44,808 [ -0.5 ]	39,770 [ 0.0 ]	31,495 [ 0.2 ]	7,434 [ -0.2 ]	802 [ 1.0 ]	
	中部4県 [前月比]	24,858 [ 0.2 ]	2,097 [ -0.1 ]	7,593 [ 0.1 ]	13,727 [ 0.3 ]	1,383 [ -0.6 ]	58 [ 7.4 ]	
	中部圏 [前月比]	40,559 [ 0.9 ]	6,577 [ 0.7 ]	11,278 [ -0.9 ]	20,504 [ 1.5 ]	2,125 [ 3.8 ]	75 [ 19.0 ]	
	近畿圏 [前月比]	76,237 [ 0.4 ]	21,016 [ -0.4 ]	27,961 [ 0.9 ]	23,354 [ 0.7 ]	3,518 [ -0.8 ]	388 [ -1.3 ]	
	中国 [前月比]	22,746 [ 0.9 ]	2,075 [ -1.6 ]	7,947 [ 1.3 ]	11,608 [ 0.6 ]	1,080 [ 7.0 ]	36 [ -2.7 ]	
	四国 [前月比]	9,119 [ -0.2 ]	866 [ -1.1 ]	2,622 [ -0.2 ]	5,119 [ -0.5 ]	497 [ 3.5 ]	15 [ 25.0 ]	
	九州 [前月比]	44,393 [ 0.7 ]	8,442 [ -0.3 ]	13,887 [ 0.5 ]	19,503 [ 1.5 ]	2,454 [ -0.1 ]	107 [ -5.3 ]	
	専属専任 [前月比]	41,520 [ 1.2 ]	11,571 [ -0.1 ]	12,835 [ 1.4 ]	14,591 [ 1.9 ]	2,404 [ 2.2 ]	119 [ -0.8 ]	
	専任媒介 [前月比]	159,457 [ 0.7 ]	39,328 [ -0.9 ]	49,167 [ 1.1 ]	62,405 [ 1.1 ]	7,955 [ 2.2 ]	602 [ -1.3 ]	
	一般媒介 [前月比]	125,841 [ 0.5 ]	22,636 [ -1.0 ]	31,939 [ 1.1 ]	61,020 [ 0.9 ]	9,732 [ -0.1 ]	514 [ 0.8 ]	
	売主 [前月比]	87,191 [ -0.2 ]	17,910 [ 1.4 ]	38,901 [ -1.0 ]	27,714 [ -0.3 ]	2,307 [ 0.0 ]	359 [ 3.8 ]	
	代理 [前月比]	4,528 [ 2.4 ]	1,285 [ 1.3 ]	1,091 [ 5.2 ]	1,535 [ 2.2 ]	576 [ 0.5 ]	41 [ -6.8 ]	
	総 計 [前月比]	443,471 [ 1.4 ]	339,695 [ 1.8 ]	18,047 [ 1.2 ]	4,869 [ 0.6 ]	9,917 [ 0.9 ]	70,943 [ -0.3 ]	
	賃 地  賃 域  物 別	北海道 [前月比]	3,072 [ 1.2 ]	2,443 [ 1.1 ]	105 [ -0.9 ]	53 [ -13.1 ]	78 [ 0.0 ]	393 [ 4.5 ]
		東北 [前月比]	12,511 [ 0.2 ]	10,333 [ 0.4 ]	415 [ -0.5 ]	173 [ 5.5 ]	238 [ 1.3 ]	1,352 [ -1.8 ]
		関東甲信越 [前月比]	16,220 [ 3.6 ]	12,538 [ 3.6 ]	765 [ 3.1 ]	463 [ 3.1 ]	514 [ -1.5 ]	1,940 [ 4.8 ]
首都圏 [前月比]		260,178 [ 1.9 ]	207,851 [ 2.7 ]	7,616 [ 1.9 ]	1,367 [ -2.1 ]	3,337 [ 1.3 ]	40,007 [ -1.7 ]	
中部4県 [前月比]		7,935 [ -2.5 ]	4,666 [ -4.1 ]	585 [ -0.7 ]	269 [ 3.9 ]	557 [ 0.7 ]	1,858 [ -0.5 ]	
中部圏 [前月比]		8,863 [ -6.1 ]	5,300 [ -10.5 ]	450 [ 5.9 ]	562 [ 0.7 ]	460 [ -1.3 ]	2,091 [ 1.2 ]	
近畿圏 [前月比]		104,138 [ 0.9 ]	76,803 [ 0.9 ]	5,800 [ 0.4 ]	1,078 [ 2.8 ]	3,414 [ 0.9 ]	17,043 [ 1.3 ]	
中国 [前月比]		8,049 [ 1.3 ]	4,791 [ -0.4 ]	807 [ -0.1 ]	256 [ -3.0 ]	366 [ 4.9 ]	1,829 [ 6.8 ]	
四国 [前月比]		2,608 [ 4.3 ]	1,456 [ 5.5 ]	307 [ 8.9 ]	99 [ -1.0 ]	135 [ -2.9 ]	611 [ 2.0 ]	
九州 [前月比]		19,897 [ 1.2 ]	13,514 [ 1.3 ]	1,197 [ -0.9 ]	549 [ 1.7 ]	818 [ 1.5 ]	3,819 [ 1.3 ]	